



# ANNUAL REPORT

2018

**K-STATE**  
Research and Extension  
Johnson County

**JOHNSON**  
COUNTY  
KANSAS

In partnership together



# Grand Challenges and Guiding Principles

Working with stakeholders across the state, K-State Research and Extension identified five Grand Challenges facing every Kansan. The university's research and extension services are focused on addressing these five challenges:

- global food systems
- water
- health
- community vitality
- developing tomorrow's leaders

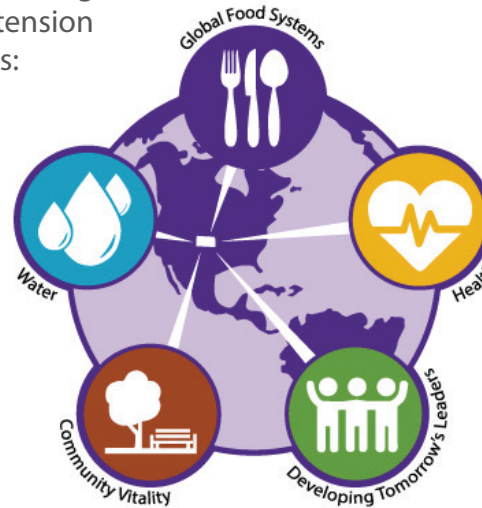
Local Johnson County Extension faculty (called "agents") balance these Grand Challenges with Johnson County Government's Guiding Principles, providing educational outreach that serves the county, municipalities, businesses and citizens.

Johnson County Extension agents take complex research-based information from universities across the country and government at all levels and localize it. Agents deliver this information without bias; their mission is to provide the most accurate, science-based research, not to sell products.

Agents help citizens understand and apply this information so that it addresses their individualized need. Once presented with the facts, it is left to the resident to ultimately determine the best solution.

Our agents work closely with faculty at the Manhattan campus so that university researchers and specialists are aware of local issues. Agents also work closely with stakeholders in the county to make sure the university continues to develop programming that benefits the citizens of Johnson County.

Cover photo courtesy of White Tail Run Winery, Edgerton, KS



Slice of Ag is an Extension program that teaches fourth-graders where their food comes from.

Above, students observe a dairy milking demo provided by the Southwest Dairy Farmers.

# Contents

- 4 Agriculture and Natural Resources
  - Family and Consumer Sciences
- 6 Home and Family
- 8 Nutrition and Health
- 10 4-H Youth Development
  - Horticulture
- 12 Ornamentals and Turf
- 14 Fruit and Vegetable Production
- 15 Community Development
- 16 Partnerships and Collaborations
- 17 Funding
- 18 Our Volunteers
- 19 Key Stakeholders



## A Message from the Director

Educating and connecting Johnson County citizens with unbiased research-based information is at the heart of our Extension work. The services we provide to our dynamic community range from fruit and vegetable production to computer science skills for the youth involved in our 4-H program.

How do we stay relevant after a century of serving our community? We meet citizens' needs on a daily basis by listening to their questions, supplying fact-based information that they can apply to their individual need, and providing relevant programming and answers on current topics that affect families and businesses.

Another important role of our urban/suburban/rural-focused Extension office is providing on-going training to our cadre of certified citizen volunteers. Through our Extension trained volunteers we are able to increase educational opportunities for residents in our county. With the help of these passionate dedicated volunteers, 2018 was another stellar year in providing Extension services to our Johnson County community. Please enjoy our annual report which highlights a few of our wide-ranging accomplishments.

Sincerely,

A handwritten signature in black ink that reads "Tara Markley".

Tara Markley,  
*County Extension Director*



# Agriculture and Natural Resources



Agriculture continues to play an important role in the economic base of Johnson County: Nearly 41% of land in the county is still devoted to agriculture

**44** Agriculture, Food, and Food Processing sectors contribute to the Johnson County economy.

- Agriculture, food, and food processing sectors support **14,024 jobs, (3.13% of the entire workforce in the county)**
- These sectors provide a total economic contribution of approximately **\$3.18 billion, (roughly 7.03% of the county's economy)**

Source: *Kansas Agriculture's 2018 Economic Impact: Johnson County*, Kansas Department of Agriculture

Johnson County agriculture is diverse. We're still home to large commercial agriculture as well as an expanding small part-time farming community. We grow and raise almost every traditional crop and livestock enterprise in the county, and have expanded into commercial fruit and vegetable production including several wine-producing vineyards. Agritourism also continues to grow in the county.

With our urban neighbors close by, agriculture has both its challenges and opportunities. One of those opportunities is to help people understand where their food comes from and the variety of ways it can be produced.

With the help of local farmers, we use the media and events like Slice of Ag to educate and share our story.

Johnson County Extension works with individuals to address issues that impact their lives such as:

- small acreage management,
- pasture and forage management,
- pond management,
- water quality,
- crop production, and
- home pest control.

Photo courtesy of White Tail Run Winery, Edgerton, KS





## Extension Master Naturalists

Extension Master Naturalists provide education, outreach and service dedicated to the beneficial management of natural resources and natural areas within their communities and the county. They partner with many organizations that share this mission. One of those partners is the Johnson County Parks and Recreation District.

Extension Master Naturalists work on county park land to:

- manage invasive species,
- collect native prairie seed to help propagate our remnant prairies in the county, and
- help educate residents about the natural world around them.

“The work of Extension Master Naturalists is critical to the Johnson County Park and Recreation District.

The expertise and time that Extension Master Naturalists give to protecting our county natural areas and providing environmental education opportunities extends the reach of JCPRD in a meaningful and impactful way that can't be measured.

Matt Garrett, JCPRD field biologist

Photo: Olathe Northwest students helped Extension Master Naturalists at the Pollinator Prairie, a U.S. Environmental Protection Agency (EPA) Superfund site that was once Chemical Commodities, Inc. (CCI) in Olathe.

## Slice of Ag

The vast majority of Americans are three generations removed from the direct experiences of farming. The goal of the Slice of Ag program is to educate fourth-graders about the importance of agriculture in their everyday life.

In 2018, 940 children from Johnson County school districts converged on the Overland Park Convention Center to experience the critical role of agriculture in the making of their favorite food, a slice of pizza.

Partnering with the Johnson County Farm Bureau and the Johnson County Conservation District, Johnson County Extension staff and volunteers guided students as they rotated between eight learning stations. Each station included speakers that demonstrated an element of agriculture used to make pizza. They included:

- production agriculture
- conservation
- environment
- safety
- health
- livestock management

A full sized John Deere combine, beef cows, dairy cow and soil tunnel trailer were some of the fun tools students got to see, feel and touch before enjoying a nutritious pizza lunch.

Agriculture is a large part of Johnson County's recent and present commerce. Working to educate our youth on the various components of our county is important and will lead to future informed leaders.

Grand  
Challenges  
Served





# Family and Consumer Sciences | Home and Family

## Extension Puts Money Back Into Citizens' Pockets

Besides aging issues and family relationships development, many of Johnson County Extension's FCS Home and Family programs focus on helping county residents manage their personal finances.

Educational outreach includes helping residents find ways to save money, prepare for their financial future, improve their family's financial security, and manage their resources to meet their family's needs.

Family and Consumer Sciences (FCS) helps people ... to achieve optimal quality of life.

FCS represents human development, personal and family finance, housing, food science, nutrition and wellness, consumer issues and more.

Adapted from The American Association of Family and Consumer Sciences



**\$1,788,944**  
TOTAL RETURNED  
TO CITIZENS



Clients wait to have their federal and state income taxes prepared and electronically filed by Volunteer Income Tax Assistance (VITA) volunteers.





Extension VITA volunteers are county residents trained to work with clients and prepare their federal and state tax returns.

## Volunteer Income Tax Assistance (VITA)

Partnering with El Centro, Inc., Extension hosts a Volunteer Income Tax Assistance (VITA) site annually at the county's Sunset Drive Office Building. It is the only VITA site in Johnson County.

In 2018, tax payers with annual household incomes

of \$60,000 or less qualified for this free service. Trained volunteers:

- filed federal and state returns electronically,
- knew the latest tax information, finding deductions that increased refunds, and
- informed taxpayers of special tax credits that

they qualified for.

The Sunset Drive VITA site prepared 1,102 returns, an increase of 32.5% over 2017. Average Gross Income was \$26,381.98. A drop-off service was added to increase convenience. One hundred and fifty-four participants dropped-off their paperwork and avoided the long wait.

## KEY FIGURES

**\$1,425,171**  
RETURNED TO  
CITIZENS THRU VITA

- Total Returns: **1,102**
- Youngest: **17** years
- Oldest: **92** years
- Caucasian: **70%**
- Hispanic: **25%**
- Other: **5%**
- Seniors: **46%**
- Deaf and Hard of Hearing Taxpayers: **33**

## Medicare Counseling

Fourteen percent of Johnson County residents are over 65 years old — 82,765 people. But many do not understand Medicare, the national health insurance program. Insufficient or inaccurate information can lead to:

- late enrollment penalties,
- gaps in coverage,
- strained finances, and
- delayed health-care treatment.

Extension agent Denise Dias revived Senior Health Insurance Counseling for Kansas (SHICK) services in Johnson County in 2017. This free program offers residents the oppor-

tunity to talk with trained volunteers and get answers to questions about Medicare and other insurance issues.

During Medicare Open Enrollment, Extension provided Medicare counseling, comparison of recipients' drug plans, and review of their supplemental and Advantage plans.

In addition, Medicare classes were held throughout the year for those approaching retirement, newly retired, county employees, and those who assist someone on Medicare.

## KEY FIGURES

**\$363,773**  
MONEY SAVED BY  
MEDICARE  
BENEFICIARIES

- Number of Beneficiaries Counseled 1-on-1: **102**
- Average Savings: **\$3,566**
- Members of the Deaf Community Served: **5**
- Most Saved By a Single Individual: **\$30,805**

Grand  
Challenges  
Served





# Family and Consumer Sciences | Health and Nutrition



Extension Master Food Volunteer Anne Byrd gets down on the floor with the kids, reading them books that teach basic nutritional concepts, healthy hand washing and food safety awareness.

## Growing Futures Early Education Center

Formerly known as Head Start of Shawnee Mission, the Growing Futures Early Education Center provides children and their families with high quality early education for ages 0 – 5 years to ensure their social and academic readiness for kindergarten and beyond.

Johnson County Extension has partnered with this program for almost 20 years to bring nutrition education to these children and their families.

Studies show that not only are good nutritional habits best developed at a

young age, but also healthy eating has a direct impact on the cognitive development of children which could influence their academic achievements.

Johnson County Extension's Books & Bites is a nutrition and literacy program delivered by Extension Master Food Volunteers. The program teaches basic nutritional concepts, healthy hand washing practices, food safety awareness, and introduces easy and healthy snacks that the children help assemble and eat.



# Laying the Foundation for Healthy Living in Johnson County

Johnson County Extension's FCS Health and Nutrition programming delivers nutrition, health and food safety education to residents and partners throughout the county. Extension Master Food Volunteers, a university-trained certified volunteer group, help residents adopt healthy behaviors. Whether it's working with our youngest citizens, seniors or most vulnerable populations, Extension endeavors to improve quality of life and address health issues that can impact productivity and stability.



The kids get to help assemble and eat their healthy snacks in Extension's Books & Bites, a nutrition and literacy program for children ages 0 – 5 years.

“The teachers and kids love having your group!”

The kids love being able to 'scoop' and help make the snack. Children ask questions later in the day referring back to what they did with you. The kids like the story and they all appreciate the hands-on activity and focus on nutrition.

We all appreciate your efforts to give our children a positive experience with creating healthy and nutritious snacks.

Kathy McLellan,  
Volunteer and Development  
Associate, Growing Futures  
Early Education Center

## Grand Challenges Served



Health



Community Vitality



Global Food Systems



Developing Tomorrow's Leaders





## Extension Youth Embody Pillars of Performance



Comet Tech Club is one of nineteen 4-H Youth Development clubs in Johnson County. It was created to engage youth interested in Science, Technology, Engineering and Math (STEM). These Comet Tech Club members are enjoying the Johnson County Makerspace at the Johnson County Central Library. Members used the Makerspace laser engraver to make a first aid kit for their club's health and safety officer.



Preparing youth to succeed as adults is at the core of 4-H, a national hands-on learning and youth education program. Kids learn by doing, building skills like responsibility, resiliency and hard work, which help them succeed in life. The values found in the county's Pillars of Performance are instilled in youth throughout their 4-H tenure.

Since its start in 1902, 4-H has become a rich fixture in United States history. 4-H in Johnson County has held onto its core values but broadens its programming to meet the growing needs of today's modern society.

4-H programming is delivered by Cooperative Extension — a community of more than 100 public universities. Many of Johnson County Extension's programs focus on addressing the need for STEM-based skills in the workforce. There are 19 clubs in the county.

4-H'ers learn essential life skills as they engage in project work of their choice. With guidance from caring adults, youth become independent learners who are capable of making responsible decisions and being a productive member of society.





John Deere Ag Marketing Center reached out to the Comet Tech 4-H Club asking for help with their 100 Years of Tractors celebration. John Deere wanted small technology projects for their kids. Comet Tech Junior Leaders taught and helped young attendees build Star Wars light saber circuits.

## 4-H Prepares Youth for Workforce Readiness

A recent survey conducted by Mid-America Regional Council (MARC) listed the top ten skills Johnson County employers are looking for in a workforce. They are:

- Oral and written communication
- Detail oriented
- Problem solving
- Customer service oriented
- Creativity
- Integrity
- Microsoft Office
- Marketing
- Team-oriented / teamwork
- Organizational skills

4-H has intentionally incorporated these workforce skills into its youth development programming. 4-H teenagers are expected to give back to the community by becoming a project leader to share their knowledge and skills.

For example, the Comet Tech 4-H Club junior leaders hosted an All About Basic Electricity STEM event. They invited youth from the community to come learn the basics of circuitry and circuit boards, ending with a build-your-own-circuit activity. Youth leaders discussed the history and chemical makeup of battery and light emitting diodes, the math behind blowing circuits, and the science of electron currents. The team also participated in John Deere Family Fun Day to help 100 children of John Deere employees build Star Wars light saber circuits.

## Learning Civics and Volunteerism Teaches Youth How to Become Good Citizens

Through hands-on civic engagement, 4-H youth ages 7 – 18 learn about civic affairs, build decision-making skills and develop a sense of understanding and confidence in relating and connecting to other people. These Pillars of Performance life skills help grow 4-H youth into true leaders, knowing what it means to serve our community.

In Johnson County:

- 4-H'ers plan and run their own club meetings based on parliamentary procedure that follow Robert's Rules of Order.
- Clubs write, follow and revise a Club Constitution and Bylaws.
- 4-H'ers understand the importance of a quorum at a meeting in order for business to be transacted.
- Youth serve on committees to plan and propose new ideas to the club.
- Each club elects their own officers: president, vice president, treasurer, and secretary.
- Clubs then elect two officers to represent their club at the county level, serving on the Johnson County 4-H Council.

## KEY FIGURES



- Members: 650
- Number of Clubs: 19
- Number of Volunteer Hours: 13,322

**\$328,920**  
DOLLAR VALUE OF  
VOLUNTEER SERVICES

Grand  
Challenges  
Served



## Empowering Citizens to Make Smart Choices

### Gardening Hotline Tailors Services to Meet Residents Individual Needs

Extension's strength is its ability to provide non-biased, researched-based information. Horticulture programs, staff and highly-trained Extension Master Gardener volunteers educate thousands of county residents on managing their property. One of these programs is the Gardening Hotline, available to residents year-round through calls, emails and walk-in service.

Citizens want information on a wide range of topics. Topping the list in 2018 were requests for information on how to deal with the escalating pest, Japanese beetles, and the continuing spread of Emerald Ash Borer.

By utilizing the hotline, residents get the facts, not unproven suggestions or hear-say. Each contact receives recommended methods of control and the best cultural practices needed to resolve their particular issue.


Hotline clients save time and money from unwarranted pesticide applications and practices that don't work. If actions were recommended, residents gained peace of mind knowing their resources and money would be used wisely.

The hotline has many benefits beyond maintaining healthy plants. Extension plays an essential role in communicating the need for a healthy environment as our programs in water, soil, and air quality help make Johnson County an excellent community. And we all know a well-maintained home and landscape increases property values and a sense of neighborhood pride.

More than 5,000 residents were served throughout last year, receiving research-based information and learning how to apply it to their individual need.

“ I have consulted Johnson County Extension many times ... In my opinion, it is an invaluable resource for residents of Johnson County.

Pat,  
Lenexa resident

A close-up photograph of a Japanese beetle, characterized by its metallic green and copper-colored sheen, resting on a bright yellow flower. The beetle is positioned in the lower right quadrant of the image, facing towards the left. The background is a soft-focus green, suggesting a garden setting.

Japanese beetles were a hot topic for residents contacting the Gardening Hotline in 2018.





Extension Master Gardeners help a resident with her request to identifying the plant, quackgrass.



## Using Media to Improve Community Vitality

The success of the horticulture program is bolstered by its high visibility in the community. Agent Dennis Patton is well known in the Kansas City gardening community through his use of media. Extension information is available in easy-to-find, free publications. Weekly personal columns in *The Kansas City Star* as well as monthly articles in *The Kansas City Gardener* and *The Best Times* help Extension reach the residents of Johnson County.

Public speaking is a cornerstone of Extension. Patton and the trained Extension Master Gardener (EMG) volunteers regularly deliver presentations on a multitude of topics. The EMG Speakers' Bureau is an essential resource for many civic groups, clubs and organizations. EMG volunteers annually deliver over 80 informative, educational presentations reaching over 3,000 people. Patton delivered over 30 presentations reaching thousands. These presentations all help educate residents in maintaining a healthy landscape and property.



## National Recognition

In 2018, Dennis Patton was recognized by the National Association of County Agriculture Agents as the National Winner in Personal Columns for one of his columns in *The Kansas City Star*. His information was peer reviewed and deemed to be the best example of Cooperative Extension work across the country.

Photos: Center: Horticulture agent Dennis Patton gets frequent media requests for interviews on many topics and uses the opportunity to help educate residents.

Right: A representative of BioAdvanced presents Dennis Patton with the award for National Winner in Personal Columns for 2018.

## KEY FIGURES

**5,538** HOTLINE CONTACTS SERVED

## What Residents Said About the Gardening Hotline

- 37% said they saved time
- 30% said they saved money
- 58% said they saved up to \$50
- 35% said they saved approximately \$100
- 23% indicated it stopped them from applying an unnecessary chemical
- 99% reported being very satisfied and having their questions answered

Grand Challenges Served





# Horticulture | fruit and vegetable production

## Growing Demand for Local Food

### Assessing HOA Policies on Food Gardening

In 2018, Johnson County Extension partnered with the Johnson County Food Policy Council in a number of efforts to support the development of our local food system.

One particular effort was the audit of 188 Homeowners Associations (HOA) to assess their policies and restrictions on home food gardening. Of the 188 HOAs located in Johnson County, 114 were assessed.

While two of the HOAs did not allow home food gardens of any kind, 71 did not have their policies written into their governing documents. Many also required board approval, but did not have written guidelines for how the board was to determine approval or disapproval.

The final outcome of the assessment showed that gardening restrictions vary greatly across HOAs. It was also noted that many homeowners who reported that they were unable to garden at home were actually misinformed. To address these issues, a set of recommendations was created so that HOA boards could provide clarity to homeowners regarding policies on home food gardens, and support more home food production across the county.

Extension assists community HOA board members draft comprehensive bylaws so residents can grow their own food and participate in the local food movement.

Interest in growing local fruits and vegetables has risen sharply in the past 10 years.

Grand  
Challenges  
Served



Health



Community  
Vitality



Global Food  
Systems



Developing  
Tomorrow's  
Leaders



Water



# Community Development



Training strong community leaders is the core mission of the Community Development program.

## Engaging our Communities

Community engagement is at the heart of Johnson County Extension's Community Development program.

While that engagement takes on many different forms and involves many different partners, the goal is always the same — to help people and communities be more successful.

### Leadership Training

Johnson County Extension has participated as an educational partner in the Leadership Olathe curriculum for the past several years. This program focuses on developing and sharing a personal leadership credo that will guide participants in their life experiences.

The second training program is the Board Leadership series. Designed to provide basic training for members of community-based boards, this four-part series was hosted by local Extension professionals at locations across the state. Johnson County Extension Director Tara Markley co-facilitated the final session on strategic planning, and facilitated all four Olathe sessions.

### Group Facilitation

This past year we have been actively supporting community partners in helping to facilitate group discussions ranging from strategic planning to group dynamics. The end goal is to help the organization meet a need which an outside facilitator can help with by bringing a new perspective to the conversation. The Northeast Johnson County Chamber and the City of Roeland Park were two groups we were able to help support through this process.

**Grand  
Challenges  
Served**





Clean Water Starts Here.

SHAWNEE  
K A N S A S

### STORMWATER MANAGEMENT PROGRAM

10,000 drainage structures  
175 miles of pipes  
80 miles of drainage ditches and channels  
210 miles of natural streams  
4,533 acres of FEMA floodplain



Clean Water Starts Here.

SHAWNEE  
K A N S A S

### ONLY RAIN DOWN THE DRAIN

- Use pesticides and fertilizers sparingly.
- Repair auto leaks.
- Dispose of household hazardous wastes at designated locations.
- Clean up after your pet.
- Use a car wash or wash your car on a lawn or other unpaved surface.
- Sweep up yard debris rather than hosing down areas.
- Compost or recycle yard waste.
- Clean paint brushes in a sink and properly dispose of excess paints.
- Properly dispose of construction debris like concrete and mortar.
- Never rake leaves into or near storm drains, ditches or streams.



## Collaborations and Partnerships

Our agents work with Extension volunteer leadership, county officials and departments, local business leaders, agencies, non-profits and other area stakeholders to create partnerships that guide the development of Johnson County Extension programming.

These critical collaborations extend Extension's educational outreach further into the community and ensure that 1) county residents are best served, 2) their evolving needs are addressed, and 3) Extension funding is expended responsibly on local issues.

- |  |                                       |
|--|---------------------------------------|
| ADM Cares                                      | City of Fairway                       |
| Alliance for Economic Inclusion                | Farm Service Agency                   |
| Arcare   | Financial Professionals Inc.          |
| Bayer United States                            | City of Gardner                       |
| Bloom Living Senior Apartments                 | Gardner Farmers Market                |
| Blue Valley School District                    | Gardner Grange                        |
| Bridging the Gap                               | The Goddard School                    |
| Catholic Charities                             | The Good Samaritan Society            |
| Catholic Diocese Schools                       | Growing Futures Early Education, Inc. |
| The Confucius Institute                        | Hen House Market                      |
| Cultivate KC                                   | Hindu Temple and Cultural Center      |
| Deanna Rose Children's Farmstead               | Hospice House - Olathe Health         |
| Desoto Career and Technical Education Advisory | HyVee                                 |
| El Centro, Inc.                                | Johnson County Commission on Aging    |
| Evergreen Living Innovations, Inc.             | Johnson County Community College      |





Tish Webb, manager of incoming quality and quality control - chemistry, gave 4-H Science Matters youth a tour of Bayer Science's laboratories in Shawnee.



# Funding

## Educational Outreach

Of the 61 million dollar K-State Research and Extension Cooperative Extension system budget, the federal appropriation makes up 5.2 million dollars (9%). The vast majority of this federal appropriation for Cooperative Extension is from the Smith Lever funding and its related offshoots.

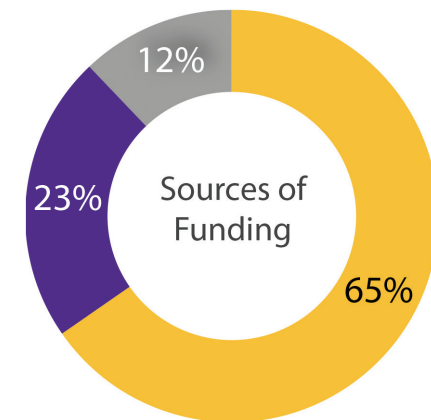
Johnson County Extension supplements its core funding from county, state and federal governments through grants, participation fees, product sales and private contributions.

- Johnson County Conservation District
- Johnson County Continuum of Care on Homelessness
- Johnson County Developmental Supports
- Johnson County Emergency Management
- Johnson County Extension Education Foundation
- Johnson County Fair Board
- Johnson County Farm Bureau
- Johnson County Food Policy Council
- Johnson County Health and Environment (WIC)
- Johnson County Library
- Johnson County Manager's Office
- Johnson County Noxious Weeds
- Johnson County Parks and Recreation
- Johnson County Public Works
- Johnson County Sheriff's Department
- Johnson County Stormwater Management Advisory Council
- Kansas City Native Plant Initiative
- Kansas Department of Aging and Disability Services
- Kansas Department of Health and Environment
- Kansas Rural Center
- Kansas State University – Olathe
- KC Food Hub
- KC Healthy Kids
- K-State Research and Extension Horticulture Center – Olathe
- City of Lenexa
- Lenexa Farmers Market
- Life Centers of Kansas
- Live Well Johnson County
- Merriam Farmers Market
- Mid-America Regional Council (MARC)
- Mission Market
- My Resource Connection
- Natural Grocers
- National 4-H Council
- Northeast Johnson County Chamber
- City of Olathe
- Olathe Church of Jesus Christ of Latter Day Saints
- Olathe Communities that Care
- Olathe Farmers Market
- Olathe Head Start
- Olathe Latino Coalition
- Olathe Public Library
- Olathe School District
- Olathe Towers and College Way Village

- Olathe Unit – The Boys and Girls Club of Greater Kansas City
- City of Overland Park
- Overland Park Arboretum and Botanical Garden
- Overland Park Farmers Market
- Overland Park Convention Center
- Poplar Court Senior Living Housing
- City of Prairie Village
- Ridgeview Village
- City of Roeland Park
- Santa Fe Waystation Food Pantry – St. Mark's United Methodist Church
- City of Shawnee
- Shawnee Mission Farmers Market
- Shawnee Mission School District
- Southwest Dairy Farmers
- Spring Hill FFA
- St. Agnes Catholic School
- Sunflower Foundation
- WaterOne
- The Wellstone at Mission
- Whole Foods Market

Sources of Funding

|   |            |
|---|------------|
| <b>Johnson County Government</b>                      | \$793,602  |
| <b>Kansas State University and Federal Government</b> | \$273,957* |
| <b>Johnson County Extension Revenue Generation</b>    | \$147,104  |



\* 2017 number. 2018 not available at time of print.





# Our Volunteers

## and the Value of Their Service

### Johnson County Extension Volunteers

#### K-State Master programs:

##### Extension Master Food Volunteers

- Volunteers: 86
- Hours: 8,730

##### Extension Master Gardeners

- Volunteers: 444
- Hours: 54,758

##### Extension Master Naturalists

- Volunteers: 68
- Hours: 4,570

#### Additional programs:

##### 4-H Youth Development (adult & youth)

- Volunteers: 235
- Hours: 13,322

##### Family and Community Education

- Volunteers: 392
- Hours: 1,665

##### Home and Family Volunteers

- (Volunteer Income Tax Assistance [VITA]; SCHICK/Medicare; & others)
- Volunteers: 46
  - Hours: 1,348

TOTAL NUMBER OF VOLUNTEERS: **1,271**

TOTAL VOLUNTEER HOURS: **84,393**

We could not provide our high level of service without our dedicated volunteers. Passionate. Hardworking. Hot or cold. Rain or shine. These citizen volunteers are out there working for us and our community. They increase our educational outreach exponentially.

Volunteers in our three Masters programs are county residents interested in health and nutrition, horticulture, and/or natural resources and the environment. Expert training from university and industry experts increases their knowledge and skill. Once trained and certified, these volunteers are required to serve a minimum number of hours annually.

Johnson County volunteers give back to their community by facilitating research-based, accurate, unbiased Extension educational programming.

### Dollar Value of Extension Volunteer Service to Johnson County



84,393 hours  
X \$24.69 per hour\*  
**\$2,083,663**

*\* Source: Independent Sector 2017*

EQUIVALENT TO **40** FULLTIME EMPLOYEES



VOLUNTEER FTE EQUIVALENT



PAID STAFF (9 FTE + 8 PTE)



# Key Stakeholders

“ The Cooperative Extension System is a tripartite system with local, state, and federal cooperators each wanting the same overall goals: a better educated and better engaged populace.

Dr. Gregg Hadley,  
Associate Professor and Director for Extension

## Kansas State University Research and Extension

**Richard B. Myers**  
President

**Dr. Charles S. Taber**  
Provost and Senior Vice President

**Dr. Ernie Minton**  
Interim Dean of the College  
of Agriculture, and  
Interim Director of K-State Research  
and Extension

**Dr. Gregg Hadley**  
Associate Professor and  
Director for Extension

**Headquarters**  
K-State Research and Extension  
123 Umberger Hall  
Manhattan, KS 66506  
785.532.5820  
ksre.k-state.edu

**Johnson County**  
K-State Research and Extension  
11811 S. Sunset Drive  
Suite 1500  
Olathe, KS 66061  
913.715.7000  
johnson.k-state.edu

## Johnson County Board of County Commissioners

**Ed Eilert**  
Chairman

**Ron Shaffer**  
First District Commissioner

**James (Jim) P. Allen**  
Second District Commissioner

**Steven C. Klika**  
Third District Commissioner

**Jason Osterhaus**  
Fourth District Commissioner

**Michael Ashcraft**  
Fifth District Commissioner

**Mike Brown**  
Sixth District Commissioner

## Johnson County Managers

**Penny Postoak Ferguson**  
County Manager

**Maury Thompson**  
Deputy County  
Manager

**Joe Waters**  
Assistant County  
Manager

**Aaron Otto**  
Interim Assistant  
County Manager

## Johnson County Extension Council

**Larry Justice**  
Chair

**Jean Porter**  
Vice Chair

**Stephanie Marksz**  
Secretary

**Susie Mize**  
Treasurer

**Nancy Chapman**  
**Julie Dowd**  
**Pete Goetzmann**  
**Michael McDermott**  
**Kim Romary**

## Extension Program Development Committees (PDCs)

**Agriculture and Natural Resources**  
Julie Dowd  
Ted Guetterman  
Pete Goetzmann  
Larry Justice  
Jim Walton

**Community Development**  
Nancy Chapman  
Chris Flores  
Susan Hayden  
Pam McConnell  
Michael McDermott  
Deb Settle

**Family and Consumer Sciences**  
Maggie Baker  
Renee Bryant  
Constance LaHue  
Susie Mize  
Cindy Nice  
Jean Porter  
Rhonda Retting

**4-H/Youth Development**  
Michael Lemon  
Whitney Livengood  
Stephanie Marksz  
Meredith Mense  
Kim Romary  
Trisha Smith







New Cooktop for Master Food Volunteers



# ANNUAL REPORT 2018

11811 S. Sunset Drive, Suite 1500, Olathe, KS | [johnson.k-state.edu](http://johnson.k-state.edu) | 913.715.7000

**K-STATE**  
Research and Extension  
Johnson County  
In partnership together

**JOHNSON COUNTY**  
KANSAS

### Our Mission

We are dedicated to a safe, sustainable, competitive food and fiber system and to strong healthy communities, families, and youth through integrated research, analysis, and education.

Kansas State University Agricultural Experiment Station and Cooperative Extension Service  
K-State Research and Extension is an equal opportunity provider and employer.



Serving Johnson County, Kansas since 1917