



Clover Clips

CAMP EDITION

A newsletter for Johnson County 4-H families

March 2012 Issue

- Camp 101.....1
- Campference.....2
- Citizenship in Action..4
- Discovery Days.....2
- Facebook.....5
- Fantastic Four Camp..1
- Fantastic Four /Camp
101 Scholarships.....1
- Horse ID and Horseless
Horse Certificate
Deadline.....4
- Johnson County
Ambassadors.....4
- Wildlife Habitat 101...3
- Project Enrollment....4
- Robotics, Science and
Space Camp.....2
- Seeking Camp
Counselors.....2
- Spring Livestock Shows
and Weigh-in.....3
- Summer Cooking
Camp.....2
- T-Shirt Design
Contest.....4
- Yard Signs.....5

Greetings 4-H Families!

The first part of this issue of Clover Clips is dedicated to all of the over-night and day camp opportunities for the summer of 2012. There is something for everyone! Day camps and our overnight 4-H camp are scheduled through the months of May, June and July. Make sure to take the time to review all the great camping opportunities with your 4-H family and mark your calendar. I hope to see you this summer! --Kaitlyn

Fantastic Four 4-H Camp: June 21-24

This camp is a four day/three night camp experience for ALL youth ages 7-11. Camp is held at the Rock Springs 4-H Center in Junction City, KS. 4-H membership is not required. Transportation, lodging, three home cooked meals a day and access to camp activities are provided! Campers will ride horses, go canoeing, hike the trails, try their hand at archery and jump in the pool. Your camper will sing songs by the campfire, make crafts and meet new friends. Registration, payment and paperwork are due by April 30. Registration and payment details can be found at www.johnson.ksu.edu/4HCamps.

Camp 101: June 21-24

Camp 101 is a one-of-a-kind leadership experience for Johnson County 4-H'ers ages 12 and 13. Participants will gain leadership, presentation and communication skills. Transportation, lodging, three home cooked meals a day and access to camp activities are provided! Campers will have the opportunity to lead group activities with the younger campers. 4-H'ers attending Camp 101 will also have the chance to enjoy camp activities like horse-back riding, archery, canoeing and much more! Registration, payment and paperwork are due by April 30. Registration and payment details can be found at www.johnson.ksu.edu/4HCamps.

Fantastic Four and Camp 101 Camp Scholarships

Thanks to a valuable partnership with Nichols Company Charitable Trust, Johnson County 4-H'ers are eligible to receive camp scholarships. Camp scholarships are available to Johnson County 4-H Members who are planning to attend overnight 4-H camp. The recipients will be selected by the 4-H Program Development Committee and a refund check will be issued to the applicant after the committee makes its selections. The scholarship amount will not exceed 50% of the camp registration fee. The responses to the essay questions will be weighted according to the pre-assigned total possible points. Scholarship applications are due to the Extension office by April 30. The scholarship application can be found at www.johnson.ksu.edu/4HCamps.

Seeking Camp Counselors for Overnight Camp

Each group of eight campers at 4-H camp is accompanied by two counselors: one adult and one teen. We are seeking responsible, positive, caring and patient volunteers to serve as camp counselors for the Fantastic Four 4-H Camp. Camp Counselors are required to have a current VIP on file with the Extension office, turn in a completed Kansas 4-H Participation form and attend Camp Counselor training at Neosho County Community College, Ottawa on June 10. To be selected as a teen counselor youth should have reached their 16th birthday prior to June 21. The camp counselor application process includes an electronic application and a 10 minute phone interview. The application deadline is April 30. The position description and link to the application are posted at www.johnson.ksu.edu/4HCamps.

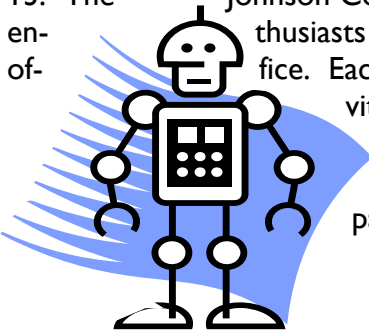


Summer Cooking Camp: July 16-20

The Master Food Volunteers and the Johnson County 4-H Youth Development Program is partnering to offer a week-long summer cooking camp. Each day will start at 9:30 a.m. and end at 3:30 p.m. This one-of-a-kind cooking camp will start off at the Extension office with opportunities to learn basic meal planning and preparation. Throughout the week campers will learn from Extension Master Food Volunteers and other community culinary experts through hands-on food preparation. Campers will wrap-up the week with a day spent on the road touring local food vendors and manufacturers. Registration, payment and a completed Kansas 4-H Participation Form are due by June 15. Registration and payment details can be found at www.johnson.ksu.edu/4HCamps.

RSSC: Robotics, Science and Space Camp: June 12-13

This NEW day camp opportunity will be an exciting and interactive adventure for ALL youth ages 7-13. The Johnson County 4-H and Youth Development program is seeking science and technology enthusiasts to participate in a two day- day camp series June 12 and 13 at the Extension office. Each day will run from 9:30 a.m. to 3:30 p.m. All youth ages 7-13 are invited. Participants will explore robotics, technology and aerospace projects. Registration, payment and a completed Kansas 4-H Participation Form are due by June 1. Teens are invited to assist with this day camp. Registration, payment and volunteer details can be found at www.johnson.ksu.edu/4HCamps.



Campference: June 15-18

This event is for youth ages 12-14 (as of Jan. 1, 2012). Campference will be held June 15-18 at the Rock Springs 4-H Center near Junction City, KS. Participants will experience the feel of a conference while enjoying camp activities. Transportation will not be provided to this conference. However carpooling will be encouraged. Registration will be available soon. Visit www.kansas4-H.org for the most up to date registration details.

Discovery Days: May 29- June 1

Discovery Days one-of-a-kind overnight camp gives all youth ages 13-18 an opportunity to explore 4-H projects, gain leadership and communication skills and experience K-State's campus. This conference is held in Manhattan and K-State's campus. 4-H membership is not required. Participants should anticipate paying an additional fee for transportation. Registration will be available soon. Visit www.kansas4-H.org for the most up to date registration details.

Spring Livestock Shows and Weigh-In

Registration and additional information for all shows can be found at <http://johnson.ksu.edu/DesktopDefault.aspx?tabid=883> . Mail check and entry for all shows to Denise King, 32415 W. 95th St. , De Soto Kansas 66018. All checks can be made out to Johnson County Livestock Club.

Spring Beef Show

The Spring Beef Show will be held Saturday, April 28, 2012 at the Johnson County Fairgrounds, beginning at 10 a.m. Pre-registration is due April 13. Entry fee is \$15 per head, \$25 after April 13. All market steers and heifers will be weighed from 7-9 a.m. 4-H Beef project members not showing at the Spring Beef Show will be allowed to weigh-in their animals from 6–8 p.m. on Friday, April 27 at the Johnson County Fairgrounds.

Spring Goat Show

The Spring Goat Show will be held Saturday, May 12, 2012 at the Johnson County Fairgrounds, beginning at 9 a.m. Pre-registration is due April 27. Entry fee is \$10 per head, \$15 after April 27. Weigh-in will be 7–8:30 a.m. 4-H Goat project members not showing in the Spring Goat Show will be allowed to weigh their animals from 6–8 p.m. on Friday, May 11 at the Johnson County Fairgrounds.

Spring Sheep Show

The Spring Sheep Show will be held Saturday, May 12, 2012 at the Johnson County Fairgrounds, beginning at 10 a.m. (or 30 minutes after conclusion of the goat show). Pre-registration is due April 27. Entry fee is \$10 per head, \$15 after April 27. Weigh-in will be 7–9 a.m. 4-H Sheep project members not showing in the Spring Sheep Show will be allowed to weigh their animals from 6–8 p.m. on Friday, May 11 at the Johnson County Fairgrounds.

Spring Swine Show

The Spring Swine Show will be held Saturday, June 2, 2012 at the Johnson County Fairgrounds, beginning at 10 a.m. Pre-registration is due May 18. Entry fee is \$10 per head, \$15 after May 18. Weigh-in will be 7–9 a.m.. 4-H Swine project members not showing in the Spring Swine Show will be allowed to weigh their animals from 6–8 p.m. on Friday, June 1 at the Johnson County Fairgrounds.

Wildlife Habitat 101

Attention Shooting Sports members enrolled in the Hunting Skills project, or any 4-H youth that want to learn! We will hold a class on March 12 at Bass Pro Shops in Olathe from 6:30-8:30p.m. in the meeting room. Learn to identify wildlife found in Kansas and their habitats. We will also explore what they eat and where you might find them. Discussions will include wildlife that can be hunted, in addition to non-game species.

A large portion of the discussion will be geared towards preparing youth that may wish to participate in the 4-H Wildlife Habitat Evaluation Program / contest, which will be held at Fort Riley this year. It will be held on Friday April 13, 2012. The contest is about teaching young people about wildlife, the needs of wildlife, and their habitat. If we get enough interest, we hope to take a team or two to the competition again this year. Last year, our Junior team took 2nd place in the state, and one of the Juniors took individual 1st place in the state. Age groups are 9-13 and 14-18.

If you are interested in learning about wildlife, habitats, and / or might be interested in competing in a Wildlife Habitat Evaluation Contest at a State level, then join Arn Eccles at Bass Pro Shops on Monday March 12 from 6:30-8:30pm. The meeting room is located on the second floor, just east of the firearms counter.

Project Enrollment

Project enrollment as of February 28, 2012 is posted at www.johnson.ksu.edu/4Hforms. There are multiple versions of the report sorted by either Club Name, Last Name of 4-H'er or Project Name. Any 4-H'er wishing to add or drop a project will be asked to submit a project add/drop form. The form can be found at www.johnson.ksu.edu/4Hforms.

The project add/drop deadline for new and returning 4-H'ers will be May 1. 4-H'ers who have not established project enrollment by May 1 will not be eligible to exhibit in the corresponding project area at the Johnson County Fair. A list of the departments within the 4-H division of the fair and a list of corresponding projects is posted at www.johnson.ksu.edu/4HForms. Questions about edits to the list can be directed to Pat Geier at pat.geier@jocogov.org or 913-715-7000.



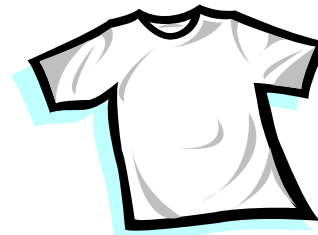
Johnson County 4-H Ambassadors

The Johnson County 4-H Ambassadors are getting geared up for a great spring and summer full of promoting 4-H. Recently, ten Ambassadors and Melinda Dennis, the Ambassador Advisor, attended the state-wide county Ambassador training at the Rock Springs 4-H Center. This year's training theme was Get Your Game On With 4-H. Participants attended various sports themed workshops about leadership, communications skills and growing 4-H membership. Our county Ambassadors will be doing club visits throughout the spring. Be looking for an Ambassador at an upcoming meeting. Participants in photo (L to R): Back row: Michaela Mense, Bradley Allen, Erin Sullivan, Kassidy Forshey, Lucas Allen. Front row: Kendall Haun, Rachel Chall, Sabrina Graham, Courtney Claxton and Julia Shields.

Kansas 4-H

T- Shirt Design

Contest



The Kansas 4-H Youth Leadership Council is holding the 2nd annual, Design Contest for their next T-Shirt that will be sold starting in the summer of 2012. Any current 4-H member is encouraged to submit a design. Submissions are due by Monday, April 2, 2012. Visit <http://www.kansas4-h.org/Controls/doc12902.ashx> for additional information and the official submission form.



Citizenship in Action

Johnson County 4-H Delegates attended Citizenship in Action on February 19 and 20 at our state's Capitol. 4-H'ers from across Kansas had the opportunity to participate in a mock legislative session, explore the various levels of Kansas Government and meet with local representatives. Johnson County delegates met with six senators and shared their 4-H experiences. Each visit also included a question and answer session with the senators. Participants in photo: (L to R) Kristin Gaddis, Ashley McKenny, Natalie McCracken, Senator Julia Lynn, Julia Shields, Spencer Dennis, Anna Long and Katie Connor.

Horse ID and Horseless Horse Certificate Deadline

All Horse ID and Horseless Horse certificates are due to the Extension office by **May 1**. Appropriate forms can be found at www.johnson.ksu.edu/4Hforms.

If you are renewing an ID, bring your 2011 ID form to the Extension office. If you have a new horse, bring a completed ID form and two front view and two side view pictures to the Extension office.

Check out www.johnson.ksu.edu/4Hforms for the 2012 4-H calendar.

April

- 2 - Kansas 4-H T-Shirt Design Contest Submissions due
- 13 - Spring Beef Show pre-registration due
- 27 - Spring Goat Show pre-registration due
Spring Sheep Show pre-registration due
- 30 - Fantastic Four registration, payment/paperwork due
Camp 101 registration, payment/paperwork due
Camp Counselor Applications due
Camp Scholarship Applications due

May

- 1 - Project Add/Drop deadline
Horse ID and Horseless Horse Certificates due
- 18 - Spring Swine Show pre-registration due

K-STATE

Research and Extension

Johnson County

Cooperative Extension Service Johnson County

K- State Research And Extension

11811 S. Sunset Dr. Suite 1500

Olathe, KS 66061-7057

(913) 715-7000



Johnson County Extension Agent

4-H/Youth Development

K-State Research and Extension is committed to making its services, activities, and programs accessible to all participants. If you have special requirements due to a physical, vision or hearing disability, please contact the Johnson County Extension office at 715-7000. K-State Research and Extension is an equal opportunity provider and employer.



Johnson County 4-H on Facebook

'Like' our Facebook page to get the most up-to-date information and news about the happenings of Johnson County 4-H! Visit www.facebook.com/JohnsonCountyKS4H to like our page.

Join 4-H

913-715-7000

www.johnson.ksu.edu/4H

 K-STATE Research and Extension
JOHNSON COUNTY



Join 4-H Yard Signs

Join 4-H Yard Signs are available for purchase. Consider buying one for your own front yard or your business. Signs are \$10 a piece. The signs are made of durable plastic and come with a wire base. Stop by the office today to purchase your sign!