



Clover Clips

A newsletter for Johnson County 4-H families.

February 2014 Issue

Page 1

- * Junior Leader Program
- * County Club Day
- * Regional Club Day
- * Food Fare Review

Page 2

- * County Rabbit Project
- * Archery 4-H SPIN Club
- * Save these dates...

Page 3

- * Spring Livestock Show
- * Summer Day Camps

Page 4

- * Workforce Development Classes
- * Livestock Judging Clinic
- * Photo. Workshop
- * Environmental Engineering Camp

Page 5

- * Ks. Jr. Sheep Producer Day
- * Horse Action Team
- * KSU Animal Sciences Leadership Academy
- * 4-H Foster Children Grants Available

Page 6

- * Counselors Needed
- * Horse Judging Camps
- * Wilderness Trip
- * Sewing Camps

Page 7

- * Co. Council Meeting
- * 2013-14 4-H Calendar
- * Add/Drop Projects
- * Horse Forms Deadline
- * Beef Nominations Deadline

Page 8

- * Feb./March Calendar

Leader Update

Page 9

- * Leader Meeting dates
- * Volunteer e-Forum
- * Home Environ. Class

4-H Families,

"Leadership is practiced not so much in words as in attitude and in actions." -Harold S. Green. I am astounded on a weekly basis of the efforts and passion of both the 4-H youth and adults involved in the wide variety of events and activities going on throughout the year! Last weekend alone there was Food Fare and a State Qualifying Shooting Event happening. This edition of Clover Clips is again packed full of information including Spring Livestock Show dates, summer camp dates, and a large amount of regional/state events.

- Tara

Junior Leader Program

A county-wide Junior Leader program is coming back to Johnson County. After a break in programming we have rallied the troops and will be offering the first Junior Leader program on Monday, February 3 from 6:30-8pm. If you are between the ages of 12-18 please join us at the Extension office for this introductory meeting. This group is sure to be a blast!

4-H Club Day

The Johnson County 4-H Club Day is scheduled for Saturday, February 8 at Wheatridge Middle School in Gardner. Club Day will begin at 8:30am. The room schedule and room monitoring schedule can be viewed at www.johnson.ksu.edu/4HClubDay. The Ambassadors will run a food stand all day and would appreciate your support!

Regional 4-H Club Day

Mark your calendars! Regional 4-H Club Day is scheduled for March 15, 2014 in Lawrence, Ks. 4-H'ers receiving a top purple ribbon at County 4-H Club Day will have the opportunity to represent Johnson County at regionals.

Food Fare Review

Thank you to all of the leaders and helpers who made our 10th Annual Food Fare a success. This year's stations had a literary theme. The stations were all very creative and filled with delicious food. There were five groups that did the following books: Alice's Adventure in Wonderland, Chu Ju's House/The Empress and the Silkworm, Charlotte's Web, Wizard of Oz and Winnie the Pooh. Next year's theme will be restaurant copy cats. Start thinking about which restaurant your club would like to imitate.

County Project Opportunities

County Rabbit Project Meetings

All meetings will be held in the Open Class Building on the Johnson County Fairgrounds. Below are the dates and the possible topics of discussion.

Location: Open Class Building on the Johnson County Fairgrounds

Dates, Times & Topics:

Tuesday, February 4, 7-8:30pm - Visit with the Veterinarian-"What supplies/medications do I need to have on hand for my rabbits?"

Tuesday, March 4, 7-8:30pm - Breeding and Baby Bunny Basics

Tuesday, April 1, 7-8:30pm - Rabbit Shows & Rabbit Judging

Tuesday, June 3, 7-8:30pm - Rabbit Showmanship

Contact Information for Questions:

Susan & Liza Rogers - srgateway2000@gmail.com or 913-856-4692

Maribeth & Joanna Finley - finleyfarms@embarqumail.com or 913-856-3921

Archery 4-H SPIN Club

Archery will begin its season in early April with an Archery 4-H SPIN Club. SPIN stands for Special Interest, and serves a useful role to introduce new youth to 4-H and allow current members more of an opportunity to experience a project. This is a short term club that will meet six times and allow new, somewhat experienced, or even experienced archers the same opportunities to learn the sport of archery from 4-H certified Archery Instructors.



This year's Archery 4-H SPIN Club is for any participant between 4-H ages of 8-18 that has not competed in the State 4-H Archery Match in the past 2 years (Archery Qualifier matches not included). Meetings will be at an instructor's house near Spring Hill on Sunday afternoons. Equipment will be provided at each meeting to all enrolled that have paid the equipment fee (expected to be \$30) and turned in a 4-H Participation Form. The Archery 4-H SPIN Club can only accommodate the enrollment of 30 participants, so space is limited.

Anyone wishing to potentially attend Archery matches and join the Archery Match Practice group this summer will need to first attend this 4-H SPIN Club. The Match Practice group is pretty full, but accommodations for a few additions will try to be made. Archery 4-H SPIN Club is an introduction to the fast growing sport of archery. An announcement with the date and instructions for enrolling is planned for the March edition of Clover Clips. Online registration is expected to open in early March. As the date gets closer, more information will be posted on the JOCO 4-H Shooting Sports website, www.4-Hshootingsports.com (click on Archery Club Calendar).

SAVE THE DATE!

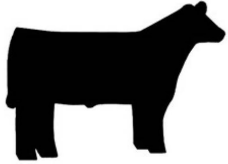
Camp registration and camp counselor registration will be due April 1. *Please plan accordingly and stay tuned for more details.*

Fantastic 4-H Camp will be June 8-11.

Campference will be June 23-26.

2014 Johnson County Fair entry deadline will be July 1.

Local Opportunities



Spring Livestock Shows

Registration details and more information about each show can be found at <http://www.johnson.ksu.edu/p.aspx?tabid=883>.



Spring Beef Show - April 26

The Spring Beef Show will be held Saturday, April 26, 2014 at the Johnson County Fairgrounds, beginning at 10am. Pre-registration is due by April 13. The entry fee is \$10 per head, then goes up to \$20 per head after April 13. All market steers and heifers will be weighed from 7-9am on Saturday morning. 4-H Beef project members not showing in the Spring Beef Show will be allowed to weigh their animals from 6-8pm on Friday, April 25 at the Johnson County Fairgrounds.

Spring Goat Show - May 31

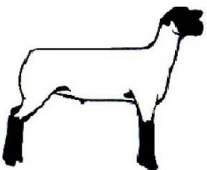
The Spring Goat Show will be held Saturday, May 31, 2014 at the Johnson County Fairgrounds, beginning at 9am. Pre-registration is due by May 15. The entry fee is \$10 per head, then goes up to \$20 per head after May 15. Weigh-in will be 7-8am Saturday morning. 4-H Goat project members not showing in the Spring Goat Show will be allowed to weigh their animals from 4:30-8:30pm on Friday, May 30 at the Johnson County Fairgrounds.

Spring Sheep Show - May 31

The Spring Sheep Show will be held Saturday, May 31, 2014 at the Johnson County Fairgrounds, beginning 30 minutes after the conclusion of the goat show. Pre-registration is due by May 15. The entry fee is \$10 per head, then goes up to \$20 per head after May 15. Weigh-in will be 8-9am Saturday morning. 4-H Sheep project members not showing in the Spring Sheep Show will be allowed to weigh their animals from 4-8pm on Friday, May 30 at the Johnson County Fairgrounds.

Spring Swine Show - June 1

The Spring Swine Show will be held Sunday, June 1, 2014 at the Johnson County Fairgrounds, beginning at 10am. Pre-registration is due by May 15. The entry fee is \$10 per head, then goes up to \$20 per head after May 15. Weigh-in will be 7-9am. 4-H Swine project members not showing in the Spring Swine Show will be allowed to weigh their animals from 4:30-8:30pm on Friday, May 30 at the Johnson County Fairgrounds.



Summer Day Camp Options Announced!

Registration opens February 17, 2014.

All times are 9am-Noon.

June 17-19
Cooking Camp

Ages: 7-11
Cost: \$50.00

June 24-26
**Weird-Wacky-and Sometimes
Edible Science**

Ages: 9-12
Cost: \$30.00

July 8-10
Science Explorations

Ages: 9-12
Cost: \$30.00

Regional Opportunities

Johnson County

Workforce Development Series

Kansas State University Olathe and Aerotek Scientific invite you to register for the Workforce Development Series: a focus on skills needed in the Animal Health and Food Safety industries. This series is available to high school (junior and senior only) students and early to late career adults looking to enhance their workforce skills. The free series will focus on the following topics:

- February 5: Interviewing Skills - Industry Standards
- March 5: Career Pathways - Now What?
- April 16: The Art of Networking

The series is open to the first 50 registered participants (25 participants per career break-out area). To learn more about this series please visit <http://olathe.k-state.edu/professional-dev/workforce-dev.html>.

Shawnee County

State Wide Livestock & Horse Judging Clinic & Contest

Shawnee County will be hosting a Livestock and Horse Judging Clinic/Contest on Saturday, March 22, 2014, at 1pm with registration from 12-12:45pm. The contest flyer is posted on Johnson County 4-H's website at www.johnson.ksu.edu/4HForms.

State Wide Photography Workshop

Shawnee County 4-H will be offering a State Wide Photography Workshop on Sunday, April 6, 2014, in Auburn, Ks. The registration form has been posted on Johnson County 4-H's website at www.johnson.ksu.edu/4HForms. Registration and payment are due on March 24, 2014 to the Shawnee County Extension office.

State Opportunities

Environmental Engineering Camp - March 21-23, 2014

Campers will learn to improve the environment, and provide healthy water, air and land for humans and wildlife. Participants will design, create, build and test designs; concentrating in the areas of wind energy and water quality. Through a variety of hands-on activities, youth will construct wind powered devices, design dams, and study wildlife habitats. The Leadership Adventure Course, canoeing and a campfire will also be part of the recreation (weather permitting).

Camp is open to youth participants aged 9-11 and their adult chaperones. All youth campers must have a designated adult chaperone who is a parent, grandparent, 4-H volunteer, teacher and/or KSRE staff. Chaperones must be 21, may be responsible for a maximum of five youth and must be on site full-time. Chaperones will receive a Power of Wind Facilitator Guide and will have their own breakout sessions.

Register and provide payment at www.rocksprings.net by February 28, 2014, or until the registration closes due to being full. Registration is limited to 34 youth campers on a first-come, first serve basis. The cost is \$160 for youth and \$170 for adult chaperones. This includes seven meals, two nights lodging at Rock Springs 4-H Center, snacks, workshop costs and support for the training team. Each participant will receive a Power of Wind curriculum guide.

State Opportunities

Kansas Junior Sheep Producer Day

All Kansas youth, parents, and leaders are invited to Kansas Junior Sheep Producer Day that will be held on Saturday, March 29, 2014 at K-State's Weber Hall in Manhattan, Ks. This one-day event will give participants the opportunity to increase their knowledge about sheep production and management. This event is designed for all ages and skill levels, providing hands on learning experience, talks and demonstrations from guest speakers and K-State faculty, and door prizes from various sponsors. All participants will receive a T-shirt, complimentary lunch, and educational materials.

Registration will begin at 8:45am with the program ending around 5pm. The cost is \$15 per person if registration is received on or before March 7 and \$20 per person after March 7 and at the door. All individuals attending (including adults) must register. Please visit the program website www.YouthLivestock.KSU.edu for more information and to register.

Horse Action Team Positions Available

Applications for the Horse Action Team are posted on the State 4-H website at <http://www.kansas4h.org/p.aspx?tabid=136>. Interested 4-H members, volunteers and agents can check the website for position descriptions. The deadline for applications is March 15, 2014.

K-State Animal Sciences Leadership Academy

The sixth annual K-State Animal Sciences Leadership Academy will be held June 11-14, 2014 in Manhattan, Ks. Twenty high school students will be selected through an extensive essay application process based on educational, community, and livestock industry involvement. This four-day event will focus on increasing young leaders' knowledge of Kansas' diverse livestock industry, as well as building participant's leadership skills.

Selected participants will have the opportunity to:

- Develop and advance their livestock leadership skills
- Interact with K-State faculty and professors
- Tour leading industry organizations in Kansas
- Learn about current industry topics and concerns
- Interact with agriculture advocates
- Gain a better knowledge of various agricultural career paths
- Tour K-State animal sciences farms and facilities

Participants will be led by the Youth Livestock Program Coordinator, as well as three K-State students and will stay in K-State housing for the duration of the event.

The academy is graciously sponsored by the Livestock and Meat Industry Council (LMIC).

Please visit the website www.YouthLivestock.KSU.edu for more information and applications. Applications must be submitted via e-mail to coordinator, Kristine Clowers at clowers@ksu.edu on or before March 15, 2014.

Foster Children Grants Available for 4-H Projects and Camp

The purpose of the Kansas 4-H Resource Family Project and Camp Grant Programs is to provide financial assistance for foster youth and their resource families who want to participate in learning opportunities available through 4-H. Through the Kansas 4-H Foundation, \$5,000 in grant funds are available to support foster care families and the children in their care who are current or potential 4-H members. The grant application and instructions are available at <http://www.kansas4-h.org/doc10899.ashx>. Grant applications are due May 1, 2014.

State Opportunities

Floor Counselors Needed for Discovery Days

Responsible, mature and dependable young adults are again needed to serve as Floor Counselors for the 2014 Discovery Days. These floor counselors will be responsible for leading floor meetings, doing room checks and making sure youth stay in their rooms after lights out each evening. Floor Counselors can expect to work evenings and early mornings. They will receive free room and board for 5 days and 4 nights and \$100. To fill out an application, please go to <http://tinyurl.com/DDFloorCounselor2014>.

K-State Youth Horse Judging Camps

The Kansas State University Horse Judging Team will host two separate camps to assist youth in learning to judge horses and give oral reasons. Please visit the website www.YouthLivestock.KSU.edu for more information and registration forms.

Beginner Camp - June 5, 2014

The beginner camp is designed for youth with very little experience judging horses and would like to learn more about note-taking and oral reasons. Emphasis will be placed on the placings of classes commonly seen in Kansas judging contests. Objectives: (1) Learn about evaluating horses in different classes, (2) Improve oral reasons, (3) Learn easy note-taking skills, (4) Gain individual instruction, (5) Sharpen presentation skills. Classes covered include Stock Type Halter, Western Pleasure, and Hunter Under Saddle.

Registration fee is \$35 per person and must be paid by May 10, 2014.

Advanced Camp - June 3-4, 2014

The advanced camp is designed for youth with some experience judging horses and would like to learn more about note-taking and oral reasons. Emphasis will be placed on the placings and reasons of classes commonly seen in Kansas judging contests. Objectives: (1) Learn about evaluating horses in different classes, (2) Improve your oral reasons, (3) Learn easy note-taking skills, (4) Gain individual instruction, (5) Sharpen your presentation skills. Classes covered include Stock Type Halter, Western Pleasure, Hunter Under Saddle, Horsemanship/Equitation, and Reining. Youth will be housed in K-State's dorms and will be assigned a roommate. Registration fee is \$115 per person and must be paid by May 10, 2014.

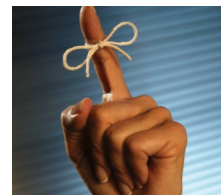
2014 4-H Venturers Wilderness Trip

The Venturers program has been available to 4-H'ers and youth from our state to try their hand at wilderness backpacking, canoeing or whitewater rafting for the last 14 years. This year's trip will focus on backpacking, but will also include some sand surfing and whitewater rafting, as well as some sightseeing. The registration form has been posted on Johnson County 4-H's website at www.johnson.ksu.edu/4HForms.

Sewing Camps

The 4-H FCS Action Team has scheduled a Junior Wildcat Sewing Camp, June 30 - July 2 (ages 9-12) and a Senior Wildcat Sewing Camp, July 1-3 (ages 13-18) at the K-State Salina Campus. Attendance numbers will be limited, so put the dates on your calendar and watch for notice of on-line registration later this spring.

Don't Forget!



4-H County Council Meetings

Each club needs to have two youth and two adults serve as the club's representatives to 4-H County Council. The meetings occur on the 1st Monday of every other month at 7pm. The meeting that was to take place on January 6 was rescheduled for February 3. The special program with Diane Mack, who is the 4-H Northeast Area Specialist, will take place during the meeting on March 3. It will be a great time and you will not want to miss out. If you have any questions please contact Tara.

4-H Calendar for 2013-2014

The 2013-2014 Johnson County 4-H Calendar is now available. This is great for returning and new 4-H families to use as a reference for upcoming 4-H events and deadlines. This year we have created a Google calendar. It can be viewed at www.johnson.ksu.edu/4HForms. You can share the calendar with your own Google calendar and it will automatically sync with any additions or changes that might be made. The calendar is updated throughout the year as events are scheduled. You can also check Clover Clips for updates on event dates and deadlines. A hard copy of the "Events List" has also be uploaded to the website.

Adding/Dropping Projects

The project add/drop deadline for new and returning 4-H'ers will be May 1. 4-H'ers who have not established project enrollment by May 1 will not be eligible to exhibit in the corresponding project area at the Johnson County Fair. Project enrollment is an important component of the project experience. Any 4-H'er wishing to add or drop a project will be asked to submit a project add/drop form. The form can be found at www.johnson.ksu.edu/4HForms.

JUST
ADDED!

Horse Identification and Horseless Horse Certificate Deadline

All Horse Identification Certificates and Horseless Horse Certificates are due to the Extension office by 5pm on May 1, 2014. Appropriate forms can be found at www.johnson.ksu.edu/4HForms.

JUST
ADDED!

KJLS and KSF Beef Nomination Deadline

4-H members planning on showing their animals at the Kansas Junior Livestock Show and/or the Kansas State Fair need to have nominations in to the Extension office by May 1, 2014. Information pertaining to the Kansas Livestock Nominations can be found at www.YouthLivestock.KSU.edu.

Check out www.johnson.ksu.edu/4Hforms
for the 2014 4-H calendar.

February

- 3 - Rescheduled County Council meeting
 - Jr. Leader Program Introductory meeting
- 4 - County Rabbit Project Meeting
- 8 - County Club Day

March

- 3 - County Council meeting
- 4 - County Rabbit Project Meeting
- 15 - Regional Club Day

K-STATE

Research and Extension

Johnson County

Cooperative Extension Service Johnson County
K- State Research And Extension
11811 S. Sunset Dr. Suite 1500
Olathe, KS 66061-7057
(913) 715-7000

“Kansas State University Agricultural Experiment Station and Cooperative Extension Service.” K-State Research and Extension is committed to making its services, activities and programs accessible to all participants. If you have special requirements due to a physical, vision or hearing disability, please contact the Extension Office at (913) 715-7000. K-State Research and Extension is an equal opportunity provider and employer.

Contact Us!

Tara Markley, 4-H Agent -
tara.markley@jocogov.org

Amanda Fraunfelter, 4-H Program Manager -
amanda.fraunfelter@jocogov.org

Christin Bartels, 4-H Office Professional -
christin.bartels@jocogov.org

Clover Clips News

Clover Clips will no longer be password protected on the website. We hope this will make Clover Clips more accessible to all of our 4-H'ers.

Submission Deadline - The deadline for submissions for Clover Clips will be on the 20th of each month. If that date falls on a weekend please check the 2014 4-H Calendar at www.johnson.ksu.edu/4HForms for the deadline for that month. If you have a submission that you would like to have considered for an edition of Clover Clips please send it to Christin at christin.bartels@jocogov.org.

Johnson County 4-H on Facebook



‘Like’ our Facebook page to get the most up-to-date information and news about the happenings of Johnson County 4-H! Visit www.facebook.com/JohnsonCountyKS4H to like our page.

Leader Update

Community Leader Meetings

These meetings are where important information is shared and feedback can be heard. Please have at least one leader present at these meetings.

April 22

Extension office – 6:30–8:30pm

If you have a conflict on these dates please contact Tara.



e-Forum 2013-2014



North Central Region Volunteer e-Forum 2013-2014

The 2013-2014 North Central Region 4-H Volunteer e-Forum will be broadcasted from local county Extension offices. Participation will be as simple as connecting with your local 4-H Youth Development Extension Professional. Join with other 4-H volunteers in your community and across the 12-state North Central Region to learn cutting edge information that will help you work effectively with 4-H members. Session topics include Working with Parents, Engaging Teens and Older Youth in 4-H, Using Technology to Enhance Your 4-H Experience, and Exploring the Science of 4-H Projects.

Registrations are now open for all sessions. Please click on the session title to register. Register for each session separately. Registered groups/participants will receive reminder e-mails, and the link to the session recording. Please register even if you cannot attend the live session, by registering, you can attend later.

[Watch the Information and Promotion Video](#)

[Session Descriptions](#)

Registration link: [Exploring the Science of 4-H Projects](#) - Monday, February 3, 2014

Time: 7-8:30pm Central Time

New Class Opportunity for Home Environment Project Leaders!

*Intro to Furniture Painting Techniques Workshop, February 24-26, 2014
9am-4pm, Open Class Building, Johnson County Fair Grounds*

Experienced furniture-ista Lisa Rader will lead you through techniques and demonstrations, so that you will leave this workshop with a finished piece. You'll also gain knowledge of distressing, stenciling, and other techniques. Class fee of \$65 includes three days of studio time, guidance from expert instructors, and other goodies.

ORIENTATION SESSION: Bring a photo of your project with you. Wednesday, February 19, 2014, 9-10:30am, Johnson County Extension office.

For more information and to register for the workshop visit <http://www.johnson.ksu.edu/p.aspx?tabid=20> and click on the Family & Consumer Sciences (Home and Family) Class Schedule. Registration closes February 19, 2014, or if the class fills before then.