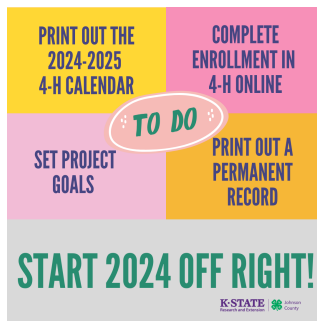


# Clover Clips

A newsletter for 4-H families

## Announcements



### 2025 Enrollment & A New Year

4-H Online opened October 1 for new families to enroll and current families to re-enroll for the 2025 4-H year. We ask that all current 4-H members be reenrolled by **November 1, 2024**. The website for 4-H Online is <http://v2.4honline.com>. As a reminder, the \$15 program fee will be paid at the time of enrollment within 4-H Online. (Adult volunteers and Cloverbuds will not be charged the fee.) Enrollment guides for families and volunteers are posted at [HERE](#).

A note to families reenrolling 4-H'ers... You will need to select the club and all desired projects during reenrollment as Projects and Clubs will not prepopulate from last year. If a project is selected that the 4-H'er was enrolled in last year, the years in project will increment correctly based on what number was entered the previous year. **You will be able to continue to edit the projects you are enrolled in until the final May 1st deadline.** If you have any questions about enrollment, please contact your club leader or the Johnson County 4-H office.

Upon enrolling, check out these great guides! Welcome [guide](#) and new family [guide](#).

### 4-H Project Work

Start thinking now about what projects you will want to complete work in. Maybe you want to try a new project (checking out a county-led project is a great way to try something new). Is there a project you have experience in that you want to dig deeper into? If you are an older 4-Her, you could lead a project and teach others.

Here is a [guide](#) that explains the 4-H projects in more detail. When you enroll in 4-H Online, you can select which projects you want to work on this year. These project selections can be edited, until the final May 1st deadline.

Project Report forms are a valuable tool to use when completing project work. Here is the [link](#) to the report forms (note: there are three age divisions for reports). Completing one project report form is now required to receive your bronze - gold guard achievement pins (year 2-9).

How does that work?

1. Download the project form now to start tracking your work
2. Choose ONE project to dig deeper into

3. Set goals, start learning in this project, find ways to serve and lead in this project
4. Take pictures of all your work along the way

4-H projects can be more than just a fair entry -- this is a great [guide!](#)

Do you follow our Johnson County 4-H [Facebook page](#)? We will be highlighting specific projects all November - follow us to learn more! Also, check out the countywide project offerings in this newsletter below.

---

## Countywide Project Opportunities

---

### Countywide Entomology Project



Get ready for a bug-tastic adventure! Come join us and discover the thrill of exploring the fascinating world of insects. From the basics of insect identification to advanced techniques for collecting and studying insects, we'll cover it all! Whether you're a seasoned bug enthusiast or just starting out, our meetings are the perfect place to learn, ask questions, share your knowledge, and make new friends. This county project meeting will be held on the **3rd Monday of each month!**

The November meeting will be an introduction to the project and the essential tools you need to get started. Even if you don't know that entomology is for you, come and see what all the buzz is about!

This first meeting will be held **Monday, November 18, 2024, 6:00 PM** at Beautiful Savior Lutheran Church (Room #115), 13145 Blackbob Road, Olathe, KS 66062.

No registration is required. If you have questions, contact the leader, Patrick Delancy, at [patrick.delancy@gmail.com](mailto:patrick.delancy@gmail.com).

---

### Countywide Sewing Project

Attention sewers! County sewing classes have begun! Classes are held every Thursday from 6:30-8:30 at the Extension Office until November 21st. We will not have class on Halloween. Bring your sewing machines! The first 7 weeks are designed primarily for beginner sewers. However, any skill level is welcome to come and refresh your skills, etc. We will start sewing again on January 2nd and will run until July 17th.

If you have any questions please contact Martha Powell, county sewing leader at 913-302-5812 or [mmp4powell@yahoo.com](mailto:mmp4powell@yahoo.com).

---

### Countywide Knitting Project

Have you been wanting to learn to knit? Sarah Kallansrud is a countywide knitting leader and would like to teach you how! If you are interested in learning or perfecting this skill, please email Sarah at [kallansrudSarah@gmail.com](mailto:kallansrudSarah@gmail.com) so she can plan this year's countywide sewing projects and meet your needs!

---

### Training with the Tail Waggers 4-H Dog Project

Johnson County 4-H Tail Waggers Dog Project is now accepting registrations for the 2025

training season. All registration materials must be submitted no later than **January 1, 2025**. Further details can be found at the link.

Tailwaggers sign up link: <https://forms.gle/LV4Jcf>

A mandatory orientation meeting will be held on Wednesday, January 8 at 6:30 p.m. in the 4H building on the Johnson County Fairgrounds in Gardner. Training sessions will be held weekly from January to May on Wednesdays for Showmanship and Obedience, and on Sundays for Agility.

New Tail Waggers members must commit to attending all Obedience training sessions; as each week's lesson builds on prior training activities and are not conducive for part-time attendance. If you have questions, contact Donna Holloway at [DonnaLHolloway@yahoo.com](mailto:DonnaLHolloway@yahoo.com) or 913-433-6752.

---

## County Events & Updates

---

### County Council Representatives

Each club needs to have two youth and two adults serve as the club's representatives at 4-H County Council. The meetings occur on the first Monday of odd months at 7:00 PM starting on November 4. The November meeting is especially crucial for your club to have representation, as the new County Council officers will be elected. It is encouraged that all youth interested in a County Council officer position be present for the meeting. Actively participating in two Council Committees is one of the requirements for Council Reps to receive their pin. Descriptions of each of the Council committees is posted on the [4-H Council Page](#) on the Johnson County 4-H website. Please choose at least one Event Planning committee and at least one Review Committee to participate in this year. A link for the committee sign-ups is posted on the [4-H Council Page](#). If you have questions, please contact the JoCo 4-H office.

---

### County Committees

Would you like to help plan county events like Achievement Celebration, Food Fare or Club Days? Would you like to help review scholarships or voice your opinion on county award procedures? There are several county committees to get YOU involved at the county level. Come be a part of one and meet other 4-Hers in the county. Anyone can participate in county committees - you do not have to be a council representative to participate. Look [HERE](#) for a list of committees and their responsibilities and find one that you want to be a member of and sign-up via the link on that page.

---

### 4-H Financial Audit

Attention 4-H Treasurers, Club Leaders, and Financial Review Committee members: the annual audit is required for all non-appropriated funds generated for Extension programs. This includes funds raised/collected by 4-H clubs, project clubs, affiliated groups, etc.

The Annual Financial Report document can be found on the [Leader Resources Page](#).

Every club/group who has an EIN issued by the IRS is asked to have a Financial Review Committee review the club financial records annually. Members of this committee should NOT be family members of the treasurer or signatories on the account. The committee should be composed of two 4-H members and two adult volunteers. This information is due to the Extension office by **November 1, 2024**. A reminder that the Treasurer's Book MUST be submitted from every group with an EIN. Contact the Johnson County 4-H office with any

questions.

---

## 4-H Calendar Events

Check out all the available 4-H Projects and Events coming up in the next few weeks.

---

**Saturday, November 2nd 2:00 - 4:00 PM**

**County Achievement Celebration**

Join us as we celebrate youth & volunteers. Check in at 2:00, games begin at 2:15, program at 3:00

**Registration:** Fill out this RSVP [form](#) by **October 25**

**Contact:** [Lexi](#) or [Cyla](#)

**Location:** 13145 S Blackbob Rd. Olathe, KS

**Monday, November 4th 7:00 PM**

**County Council Meeting**

This is the first council meeting for the new 2024-2025 year!

**Contact:** [Lexi](#) or [Cyla](#)

**Location:** Johnson County Extension Office

**Monday, November 11th**

Extension Office Closed due to Veterans Day observance

**Tuesday, November 12th 6:30 - 8:00 PM**

**New Family Orientation**

This informational session is great for parents of first, second or even third year members. We will cover topics such as enrollment, project selection, record books, 4-H events, county activities, and allow time to answer questions.

**Registration:** <https://forms.gle/3AYpdxXFhpn3cNb87> by November 7th

**Contact:** [Lexi](#) or [Cyla](#)

**Location:** Johnson County Extension Office

**Wednesday, November 13th 6:00 PM**

**Ambassadors Meeting & Interviews**

Each applicant will be contacted with their individual interview information.

**Contact:** [Lexi](#) or [Cyla](#)

**Location:** Johnson County Extension Office

**Wednesday, November 20th 6:30 PM**

**Club Leader Meeting**

Please have one club leader or another club parent representative present.

**Contact:** [Lexi](#) or [Cyla](#)

**Location:** Johnson County Extension Office

[View 4-H Calendar](#)

---

## Registration Deadlines

**Monday, November 4th**

**Ambassador Applications Due**

Applicants must be between the ages of 14-18 (before January 1, 2025). For more information and the application, please visit [www.johnson.k-state.edu/programs/4-h/events-programs/ambassadors/](http://www.johnson.k-state.edu/programs/4-h/events-programs/ambassadors/).

Already a Johnson County Ambassador? Don't forget to turn in the Ambassador Application-Renewal Form.

---

## State Events & Updates

---

# Horse Panorama

Save the Date: **February 22-23rd, 2025 @ Rock Springs Ranch**  
Registration information will be coming soon!

---

## Partner Events

---

### NEW! 4-H Afterschool Cooking Program in Gardner

The Master Food Volunteers are offering a monthly afterschool cooking program in Gardner that is open to any 4-H'er who is interested! Sessions are usually held the first Thursday of every month from 3:30 PM -5:00 PM, Students will learn how to prepare various recipes and develop skills that are transferable to preparing foods for the fair and beyond. Cooking is an essential skill for life! Parents are encouraged to stay, learn, and participate with their youth. Participants will get to eat or take home food prepared during each session. Food safety, nutrition, healthy eating, physical activity, and other lessons will be incorporated into each session.

For session topics and to sign-up, visit the website here: [Afterschool Cooking Program \(k-state.edu\)](https://www.k-state.edu/4h/programs/afterschool-cooking-program/)

---

### Calling all Intermediate & Senior Bakers

Are you interested in learning how to make a chiffon cake? Attend this hands-on class to learn the art of chiffon cake making. They are a beautiful cake that has a tender and light texture. With a little practice you too can master this dessert! This cake would be a great item to enter in the fair, plus your family and friends will enjoy eating this tasty treat! This class is for 4-H youth in the intermediate or senior age category.

Class will be held November 25 from 11:00 AM - 2:00 PM. Snacks and beverages will be provided. Space is limited so reserve your seat today!

<https://lp.constantcontactpages.com/ev/reg/8ughkxw>

---

## Contact Us!

---

### Clover Clips Submission

The deadline for submissions for Clover Clips will be on the **15th** of each month. If you have a submission that you would like to have considered for an edition of Clover Clips please send it to Erin at [Erin.Yeung@jocogov.org](mailto:Erin.Yeung@jocogov.org)

---

**Lexi Ray** - 4-H Agent

**Cyla Gardner** - 4-H Agent

**Christin Bartels** - 4-H Office  
Professional

**Erin Yeung** - 4-H Event and  
Communications Coordinator

---

Cooperative Extension Service  
Johnson County  
K- State Research and Extension  
11811 S. Sunset Dr. Suite 1500  
Olathe, KS 66061-7057  
(913) 715-7000

---

For all 4-H related information, links, forms and resources

County 4-H Website

Johnson County Extension resources and programs

Extension Website

---



K-State Research and Extension is an equal opportunity provider and employer.



**K-STATE**  
Research and Extension

Johnson County K-State Research & Extension | 11811 S. Sunset Dr., Suite 1500 | Olathe, KS 66061 US

[Unsubscribe](#) | [Update Profile](#) | [Constant Contact Data Notice](#)



Try email marketing for free today!