



Clover Clips

A newsletter for Johnson County 4-H families.

June 2017 Issue

Page 1

- * Project Auction Class

Annual Fair Edition Pages 2 - 4

Page 5

- * Shotgun Season Info
- * Spring Rabbit Show
- * Tail Waggers Dog Show
- * Save these dates...

Page 6

- * Horse Project Meetings
- * Livestock Nomination Info
- * Entomology Pinning Help
- * Jo. Co. Dog Show
- * Sewing Group

Page 7

- * Spring Livestock Shows
- * Ear Tag Pre-payment
- * Horse Shows

Page 8

- * Pictures Needed
- * Food Stand Asst. Position
- * Livestock Grant/Mentor Program
- * Leadership Trainings

Reporter's Corner Page 9

Page 10

- * June/July Calendar

Leader Update

Page 11

- * New Family Enrollment
- * Livestock T-shirt Orders & Add'l Pick-up Dates
- * Requirements for Club Volunteers
- * Club Leader Resources

4-H Families,

With the arrival of spring and warmer weather, many people begin heading for the outdoors. 4-H'ers are not exceptions to this phenomenon, as 4-H offers a multitude of activities, events, and projects where being outdoors is fundamental (emphasis on the FUN!). These include Fantastic 4-H Camp, Wild Clover Camp, the Johnson County Fair, and more. I hope every Johnson County resident comes to the fair to check out the 4-H exhibits that have been entered, and everything else fair has to offer (don't forget to visit the 4-H food stand to quiet your growling stomach).

Even if a 4-H'er isn't planning on going to camp or showing in the fair, now is the perfect time to head outside to work on a current project or discover a new one. Many people don't realize that 4-H offers projects in entomology, environmental science, forestry, gardening, geology, photography, rocketry, sportfishing (which has a state-wide contest!) and more. So put on some sunscreen and bug spray. Grab your fishing pole, camera, or butterfly net and chase a great fish, photo, or bug. Check out your local nature trail or park. Whatever you do, spend more time outdoors. You won't regret it. **-Lee**

4-H Project Auction Instructional Class

The Johnson County 4-H Project Auction is the final step in the "Learning by Doing" 4-H experience. The projects for sale at the auction represent the learning, time, money and effort invested by the individual 4-H club member in the current 4-H year. The auction serves to educate club members about the process of showmanship and marketing of their project to the public through the auction. The bidders, who want artwork for their homes/businesses, wood-working furniture, baked goods for their tables, quilts for their college-bound children, etc., then bid on the project item(s) and the 4-H club member earns his/her wages to invest in the next project, college fund, or other venture that interests them.

The county will be offering a Project Auction 101 instructional class for those 4-H club members who are interested in bringing their project to auction at the Johnson County Fair. This class will provide participants instruction in the final step of their project, showmanship and marketing, and how to obtain the best price for the project. It will also serve to inform participants how to enroll their project and the rules guiding the auction. The class will be held June 28 at 7 p.m., at the Johnson County Extension office and is open to all 4-H club members and parents. The Project Auction is held at the Livestock Pavilion at the Johnson County Fair on the Friday of fair week, at approximately 8 p.m. Please mark your calendars for this informative class!



Fair Edition

2017 Johnson County 4-H Fair Book

The electronic version of the 2017 Johnson County Fair Book is available to view at www.jocokansasfair.com/Fair%20Book.htm. The Johnson County Fair Board will again provide each 4-H family with a hard copy of the fair book free of charge. Fair books will be given to club leaders to distribute to families in their club.

County Fair Entries

4-H entries for exhibits judged during the county fair will be due July 26. All entries for clothing construction, dog show, fashion revue, fiber arts, and home environment will be due on **July 1**. Late entries will not be accepted and if a 4-H'er does not meet the deadline they will not be allowed to have their item or project judged in the 4-H division.

All sheep, swine, beef and goat exhibitors will be required to submit stall requests and tag numbers by July 26. If your family has weighed and tagged their animals under a family nomination, you will be required to enter the tag number(s) with the 4-H member's name who is exhibiting the animal by the July 26 deadline. Livestock exhibitors: you must enter in showmanship if you plan on exhibiting in showmanship. **All livestock entries must be accompanied at check-in with a printed entry tag. In the event a 4-H'er forgets to bring their entry tag, the Fair office will be available to print it.**

Only online entries are accepted. The Johnson County Fair website is being updated so the link to the online entry system at www.jocokansasfair.com may not be working by June 1. Please watch your email for details on how online entries will be handled this year. Note: Once an entry is submitted it cannot be edited. If assistance is needed in making online entries please contact the Extension office or the Fair office. It is highly recommended that you print off your entry confirmation.

After the entry deadline adding a class/entry is not an option. If you are not sure about what you are taking to the fair, please wait until closer to the deadline to make your entries. This will help keep dropped entries to a minimum as the Fair Board has to pay for each dropped entry.

In order to save time with project check-in at the fair, 4-H'ers are strongly encouraged to print their entry tags at home.

Mr. and Miss 4-H

The Johnson County Mr. and Miss 4-H Program recognizes young people for the leadership and commitment they have contributed to the 4-H program and their communities. All 4-H'ers who have been a member for at least three years and are at least 13 (as of January 1, 2017) are eligible to apply. Applications are due to the Extension office by June 30. Interviews and presentations are scheduled for Saturday, July 15. Coronation will take place during the Fashion Revue on July 27. All application documents and additional information about the Mr. and Miss 4-H Program can be found at www.johnson.k-state.edu/4-h/events-programs/mr-and-miss-4-h.html. Questions about Mr. and Miss 4-H can be directed to Susan Rogers at 913-226-6167 or srgateway2000@gmail.com.

Food and Clothing Labels

Food labels (including those for Food Preservation) are available to pick up at the Extension office as well as on the Johnson County 4-H website at www.johnson.k-state.edu/4-h/events-programs/johnson-county-fair.html to print off at home. Clothing labels can be made by typing, or printing in ink, on a 3" x 5" piece of white cloth: Class Number, Name, and Address. Please refer to your department's rules in the fair book regarding labels.

Fair Edition

Photo Mats and Photo Sleeves

The Extension office has photo mats and protective photo sleeves available for Photography project members to purchase. Photo mats are \$1.25 each and photo sleeves are \$0.25 each. Photos exhibited in the 4-H Photography division at the county fair are required to be mounted on a photo mat and preferably placed in a protective photo sleeve for display. You may pick up photo mounting directions and labels at the Extension office and they are also posted at www.johnson.k-state.edu/4-h/events-programs/johnson-county-fair.html.

Entering Quilts in the Fair

If you are entering a quilt in the Johnson County Fair the ideal department to enter it in is the Fiber Arts department. The judge for Fiber Arts will be more experienced with quilts and therefore better able to give 4-H'ers helpful feedback.

4-H Foods Judging

The 4-H foods judging will take place at Gardner Elementary School from 2-8 p.m. on Monday, July 31.

A note from our FACS/Health and Food Safety agent regarding food entries:

Many of you may already be researching and testing recipes for your food entries. To make sure your entry is food safe and eligible for judging, please keep the following in mind:

- Your product should **not** require refrigeration.
- Cream cheese in any form (even baked in the recipe) is **not** allowed.
- Fresh fruit is **not** allowed.
- Egg custards and recipes using egg custards are **not** allowed (including cakes and pies).
- Fruit and pecan pies are ok so long as all ingredients have been baked. So, no fresh fruit sitting on top, please.

If you have any questions about your food entry, please contact the Extension office.

Canning and Preservation fair classes: 4-H'ers should only use CLEAR canning jars for the fair. Save the colored blue and green canning jars for home use. Colored jars may have to be opened to check canned ingredients and if it is opened it cannot go on for further judging. This a food safety issue.

Project Check-in

Projects will be checked in on Monday, July 31, from 6:30-9 p.m. and again on Tuesday from 8-10 a.m. Projects not checked in by 10 a.m. on Tuesday will not be eligible to be exhibited. Please plan on arriving before 10 a.m. to have ample time to check in all of your projects. Livestock exhibitors, please refer to the fair book for your check-in time.

Cloverbuds Show and Share

Enrolled Cloverbuds are invited to participate in Show and Share on Tuesday, August 1 from 10 a.m.-1 p.m. in the 4-H building. This is a reminder that Cloverbuds are not eligible to compete in the 4-H division at the fair. Full membership starts when youth turn 7 before January 1 of the current 4-H year. Cloverbuds can bring a maximum of two projects to show and share. Each Cloverbud will sign up for a 15 minute time slot. A signup sheet will be available Monday evening and Tuesday morning during project check-in inside the 4-H building. For more information about activities for Cloverbuds, please visit <http://www.kansas4-h.org/p.aspx?tabid=399>. Projects that are reasonable in size and are not living/breathing will be displayed in the 4-H building and available for pick up Sunday, August 6.

Fair Edition

4-H Food Stand

Each year the Johnson County 4-H Council has a food stand at the county fair. This is our largest fundraiser for the County Council. County Council funds Achievement Celebration, transportation for 4-H Camp, Discovery Days, trip scholarships for 4-H'ers, Family Night and Officers Training, County and Regional Club Days and much more. A two hour shift at the food stand is a small price to pay for a year of all these great county-wide activities!

Livestock T-shirts

The Johnson County Fair Association requires all livestock exhibitors to wear Johnson County Fair t-shirts when exhibiting livestock at the fair. The fair association is changing colors of the shirts this year, requiring the purchase of new show shirts for the 2017 year. This year's shirt will be yellow in color. The cost is \$7 per shirt. Please place your order with your club leader by your club's deadline. *****Club leaders, please see the Leader section on page 11 for details on how to place your club's order.**

Livestock and Project Auctions

Livestock Auction: Exhibitors must turn in auction forms to sell their livestock to the Fair Office by 12 p.m. Friday, or 30 minutes after the conclusion of the beef show, along with a W-9 IRS form.

Project Auction: Project auction forms must be turned in by 12 p.m. on Wednesday along with a W-9 IRS form, no exceptions.

It is against policy of the Johnson County Fair for any livestock or projects sold at the 4-H/FFA auction to be shown at any other county, state or national competition. See the 4-H/FFA Livestock Auction section or the 4-H/FFA Project Auction section in the 4-H Fair Book for more details about the Livestock Auction and Project Auction.

State Fair Entries

All 4-H exhibits that receive a purple ribbon are eligible to enter at the Kansas State Fair as long as there is a comparable department at the State Fair. 4-H'ers who qualify to exhibit at the State Fair may sign up in the Fair Office from 3-5 p.m. Thursday, August 3 and Friday, August 4. 4-H members must be 9 before January 1, 2017 to enter in the State Fair. All entries for the Kansas State Fair must be made with the Extension office by 5 p.m. Thursday, August 10. **Please note:** beef, sheep, swine and meat goat entries for the Kansas State Fair are due by July 15 and Horse Show entries are due by August 1.

Project Pick Up

All 4-H livestock and horses can be removed from the fairgrounds after 6 a.m. Sunday, August 6. All remaining exhibits will be released at 9 a.m. **4-H'ers must pick up their entries or make arrangements with another 4-H'er to pick up their entries by Sunday morning at 9:30 a.m.** If a 4-H'er does not pick up their entries it is the responsibility of the Club Leader to collect the rest of the club's entries. All 4-H entries and premium money will be available for pick up after the fairgrounds have been cleaned. It is expected that 4-H exhibitors help with fair clean-up.

County Project Opportunities

Attention 4-H Shotgun Enthusiasts!

If you are currently enrolled in 4-H, are a member of a Community Club, and are 4-H aged 12 or older, you are eligible to participate in the upcoming Johnson County 4-H Shooting Sports' Shotgun Season. The first meeting will be at 4:45 p.m. May 31, at Powder Creek Gun Club in Lenexa.

The meeting will start in the clubhouse to go over firearms safety, technique, rules and regulations of the Gun Club and Johnson County 4-H Shooting Sports. Completed, mandatory 4-H participation forms and equipment fees of \$5.00 (plus \$10.00

General Fund fee if not yet paid this year) will also be collected then. First-year shooters will visit the patterning board and, if time permits, may get to shoot on the range.

Please bring the following equipment with you to **all** practices:

- Safety Glasses
- Ear protection
- A 20- or 12-gauge shotgun. (All equipment will be checked prior to shooting.)
- Money for trap & skeet fees (\$6.50 per flight of 25).

** Shotgun shells will be provided for the first practice.

If you have any questions, please email shotgunclub@4-hshootingsports.com.



Johnson County Spring 4-H Rabbit Show

The Kaw Valley Rabbit Club is sponsoring the Spring 4-H Rabbit Show on June 3, 2017 in Gardner. Entries are due by 8 a.m. and the fee is \$3 per class/per animal. Judging starts at 8:30 a.m. and the judges are David Kroenke and Janie Elliott. Best In Show, Reserve in Show and 2nd Reserve will receive trophies. Best of Breed and Best Opposite Sex of Breed will receive awards. Trophies will be provided for Showmanship and Judging classes. Breeds sanctioned are Californian, Dutch, Florida Whites, Holland Lops, Mini Lops, Mini Rex, Mini Satin, Polish, and Satin. All ARBA recognized breeds are welcome to show. The event flyer is posted on the Johnson County 4-H website at www.johnson.k-state.edu/4-h/forms-resources/.

Tail Waggers Invitational 4-H Dog Show

An informational flyer and entry form for the Tail Waggers Invitational 4-H Dog Show is posted at www.johnson.k-state.edu/4-h/events-programs/countywide-projects.html. The event will be held on Saturday, June 24 at the Johnson County Fairgrounds in Gardner. Pre-registration is due by June 9. Also, walk in entries will be welcomed.

SAVE THE DATE!

State 4-H Horticulture Judging Contest will be August 19 in Manhattan on the K-State Campus

Kansas 4-H Livestock Sweepstakes will be August 19-20 in Manhattan.

AKSARBEN Stock Show will be September 28-October 1 in Grand Island, NE.

48 Hours of 4-H Service Challenge will be October 7-8.

County Project Opportunities

Countywide Horse Project 2017 Meetings

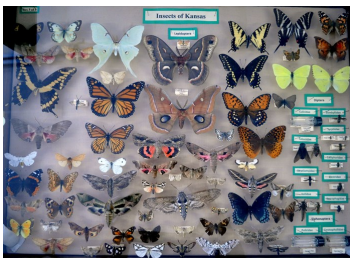
The Foundation Horse Project Team serves all 4-H clubs and members in Johnson County. This is a countywide opportunity for those interested in learning more about the horse project. Any 4-H member interested in the horse project or becoming educated about horses is welcome to participate. This team does not take the place of your 4-H club and members still need to be active in a local 4-H club of their choice. The purpose of this team is to establish a solid foundation for horse education. The focus will be on educational activities including horse husbandry, safety, feeding, industry topics, and veterinary medicine.

The remaining meetings for 2017 are June 14, August 9, and October 11. All meetings are held at the Johnson County Extension office and start at 6:30 p.m. Please feel free to contact Valentine Williams at horsedoc96@gmail.com with any questions or if you are interested in joining or attending.

2017 Livestock Nomination Materials

The updated 2017 state livestock nomination materials have been released. Information, updates, and forms may be found on the K-State Youth Livestock Program website at www.YouthLivestock.KSU.edu under "Nomination information". All state livestock nominations MUST be submitted using the updated 2017 forms in order to be accepted. There are a handful of changes and updates to the process for 2017. All species will continue requiring DNA as part of the nomination process. A "Rookie Guide" is also available to help guide new families through the nomination process with as little stress as possible. Market Beef nominations were due on May 1. All other specie nominations are due on June 15.

****Youth Pork Quality Assurance Plus Certification** - All swine exhibitors must submit a valid Youth PQA Plus certification number by June 15.



Entomology Pinning Meeting

There will be an entomology meeting to help 4-H'ers pin their insects on Thursday, June 15 at 7 p.m. in room 1010 at the Extension office. Please bring your insects and all supplies. Text Anthony at 913-475-2168, or call Margaret at 913-856-6753, to RSVP.

Johnson County 4-H Dog Show

The Johnson County 4-H Agility and Rally-O Dog Show will be on Saturday, July 8, with pre-registration and 4-H Dog Show Immunization Records due by July 1. The show will be held in the Green Building on the Johnson County Fairgrounds. A flyer/registration form is posted on the Johnson County 4-H website at www.johnson.k-state.edu/4-h/events-programs/livestock.html.

Countywide Sewing Project

Attention Future Sewers: Sewing is considered part of the STEM programs in 4-H and a lifelong skill. Are you interested in learning how to take a piece of material and creating something that can be worn? Classes are held every Thursday until July 20. Join to learn how to sew many fun projects as a beginner or as an experienced sewer who wants to have a set time to sew and to have questions answered. All levels of experience are welcomed. For more information contact Martha Powell at mmp4powell@yahoo.com or at 913-302-5812.

2017 SPRING LIVESTOCK SHOWS

Registration details and more information about each show can be found at www.johnson.k-state.edu/4-h/events-programs/livestock.html.



Spring Goat Show - June 3

The Spring Goat Show will be held Saturday, June 3, at the Johnson County Fairgrounds, beginning at 9 a.m. Pre-registration is due by May 25. The entry fee is \$10 per head, then goes up to \$20 per head after May 25. Weigh-in will be 7-8 a.m. Saturday morning. 4-H Goat project members not showing in the Spring Goat Show will be allowed to weigh their animals from 5-7:30 p.m. on Friday, June 2 at the Johnson County Fairgrounds.

Spring Sheep Show - June 3

The Spring Sheep Show will be held Saturday, June 3, at the Johnson County Fairgrounds, beginning 30 minutes after the conclusion of the goat show. Pre-registration is due by May 25. The entry fee is \$10 per head, then goes up to \$20 per head after May 25. Weigh-in will be 8-9 a.m. Saturday morning. 4-H Sheep project members not showing in the Spring Sheep Show will be allowed to weigh their animals from 5-7:30 p.m. on Friday, June 2 at the Johnson County Fairgrounds.

Spring Swine Show - June 4

The Spring Swine Show will be held Sunday, June 4, at the Johnson County Fairgrounds, beginning at 10 a.m. Pre-registration is due by May 25. The entry fee is \$10 per head, then goes up to \$20 per head after May 25. Weigh-in will be 7-9 a.m. Sunday morning. 4-H Swine project members not showing in the Spring Swine Show will be allowed to weigh their animals from 5-7:30 p.m. on Friday, June 2 at the Johnson County Fairgrounds.

Spring Bucket Calf Show - June 4

The Spring Bucket Calf Show will be held Sunday, June 4, at the Johnson County Fairgrounds, beginning 30 minutes after the conclusion of the swine show. Pre-registration is due by May 25. The entry fee is \$10 per head, then goes up to \$20 per head after May 25. Weigh in will be 7-9 a.m. Sunday morning. 4-H Bucket Calf project members not showing in the Spring Bucket Calf Show will be allowed to weight their animals from 5-7:30 p.m. on Friday, June 2 at the Johnson County Fairgrounds.

Livestock Ear Tag Pre-payment

For your convenience we have created a prepay option for ear tags so you don't have to worry about bringing cash or checks with you to weigh-in. It should also help speed up the process. Tags are \$3 each and the link to prepay can be found at www.johnson.k-state.edu/4-h/events-programs/livestock.html. Please prepay before 3 p.m. on Friday, June 2.

2017 4-H Horse Shows

Horse Shows Sponsored by the Johnson County 4-H Horse Club:

- Saturday, June 3 at the Douglas County Fairgrounds in Lawrence.
- Saturday, July 8 at the Douglas County Fairgrounds in Lawrence.

The Show Bill/Entry Forms are posted on the Johnson County 4-H website at www.johnson.k-state.edu/4-h/events-programs/livestock.html.

East Central District Horse Show

The 2017 East Central District Horse Show is scheduled for Tuesday, July 11, at the Douglas County Fairgrounds in Lawrence. Deadline for entries is June 15. The entry form is posted at www.johnson.k-state.edu/4-h/events-programs/livestock.html.

Local Opportunities

Your Pictures are Needed!

The County Council Historians would love to have pictures of your recent 4-H events, especially from spring livestock shows, shooting sports matches, club service projects, and fair preparations. Please email photos to joco4-h@jocogov.org. Please label the photos with club name and event. Other ideas of events to submit photos from would be: Officer Training and Project Fair, the Achievement Celebration, Food Fare, Club Days, club meetings, and Christmas parties.

Thanks, Alexandria and Kairi (County Council Historians)

Food Stand Assistant Position Available

The Johnson County 4-H Council is in need of help during the fair in the form of a second Food Stand Assistant. This position will be responsible for assisting in the operation of two 4-H Council food stands in conjunction with another Food Stand Assistant and under the direction of the Food Stand Supervisor. They will help ensure food stand operations meet all federal and state requirements. The applicant must be 18 years of age or older and be available to work up to 50 hours as necessary from July 31, 2017 to August 5, 2017 between the hours of 10 a.m. and 11 p.m. Compensation for this position is a \$500 stipend for all services rendered, issued on a 1099 basis.

To apply, please send resume and cover letter to Lee at lee.sigley@jocogov.org by Friday, June 16. Interviews will take place on Friday, June 23.

Livestock Grant and Mentor Applications

The Johnson County Livestock Association will again this year provide funding for their 4-H Livestock Grant and Mentor Program. The Grant Program will award \$1,100 to a 4-H'er enrolled in the beef project and \$300 to a 4-H'er in each of the sheep, swine, and goat projects. Experienced 4-H'ers who apply to the Mentor Program could earn \$500 for the beef project and \$300 in each of the sheep, swine, and goat projects. If you would like an opportunity to apply for the Grant Program or Mentor Program, please fill out an application by the July 14 due date. Applications will be available at the Extension office or online at www.johnson.k-state.edu/crops-livestock/johnson-county-livestock-association.html.

State Opportunities

Free Leadership Trainings Available

The Kansas 4-H Foundation is offering free Kansas Leadership Center trainings. This is year two in the Foundation's commitment to invest \$100,000 over three years in Kansas Leadership Center training to support Kansas alumni and volunteers. This training is a \$300 per person value that Kansas companies hold in high regard. It is open to alumni, Extension staff, 4-H volunteers or perspective volunteers. You may attend one or more of the trainings. Register at <https://kansas4hfoundation.org/klc/>. A flyer with descriptions of the workshops being offered and dates and locations is posted on our website at www.johnson.k-state.edu/4-h/forms-resources/ under the "Miscellaneous" heading.

REPORTER'S CORNER

United States Secretary of AG Perdue made one of his first appearances April 26, 2017 at the American Royal with a town hall meeting with farmers.

Representing youth of today from the Johnson County Livestock club were Logan, Grady, Tate, Dakota, Cheyenne, Dalton and Kaylee. Each youth exhibited a species they are currently enrolled in.

Secretary Perdue spoke with each 4-H member and it was a great experience.

By Kaylee King, Johnson County Livestock Club Reporter



This year, the Great Plains 4-H Club is sending three seniors out into the world! Kayley has been in 4-H for 10 years and will be dual majoring in accounting and entrepreneurship at K-State. Anna has been in 4-H for 9 years and is attending Johnson County Community College (JCCC) in the fall on a volleyball scholarship. She also plans to pursue a degree in the healthcare field. Elizabeth has been in 4-H for 8 years and is completing her senior year as a dual credit Cosmetology student at JCCC and will test for her Cosmetology license in July. In the fall, she will attend JCCC part time to earn her Associates in Cosmetology. Each of these ambitious and hardworking 4-H'ers have held numerous club offices, taught a variety of projects from Beekeeping to Soap Making, and received the KEY award for their incredible work in the 4-H program. Congratulations again, Kayley, Anna, and Elizabeth! Best wishes, from the Great Plains 4-H Club.



Kayley (left) and Anna.



Anna (left) and Elizabeth

A favorite tradition of the Great Plains 4-H Club is its annual parent-led meeting held in May. At this meeting, the parents of officers take on the role of their child and complete the duties of the office. President for the evening was Kristin Brethour, Vice President was Kevin Kwasi-borski, Secretary was Krystal Laws. The parents did an awesome job in their offices and the kids enjoyed watching the parents run the meeting (and correcting their parliamentary procedure, of course!).



By Zoe Nason, Great Plains 4-H Club Reporter

June

- 1 - Online fair entry system opens
 - Countywide Sewing Group
- 2 - Evening weigh-in for Goat, Sheep, Swine, and Bucket Calf project members **not** showing in the Spring Shows
- 3 - Spring Goat and Sheep Shows
 - Horse Show in Lawrence
 - Rabbit Show at Jo. Co. Fairgrounds
- 4 - Spring Swine and Bucket Calf Show
- 5 - County Council Officers meeting
- 8 - Countywide Sewing Group
- 13-15 - Summer Cooking Day Camp
- 14 - Countywide Horse Project Meeting
- 15 - Commercial Heifer, Swine, Sheep, & Meat Goat Nominations due to Youth Livestock office
 - County Fair livestock t-shirt orders due
 - Countywide Sewing Group
 - Entomology Pinning Meeting
- 16 - Food Stand Assistant applications due to Lee
- 22 - Countywide Sewing Group
- 24 - Tail Waggers Dog Show at Jo. Co. Fairgrounds
- 28 - Project Auction Instructional Class
- 29 - Countywide Sewing Group
- 30 - Mr. & Miss 4-H applications due to office

July

- 1 - Entries for Clothing Construction, Dog Show Fashion Revue, Fiber Arts, and Home Environment due
- 3 - County Council meeting
- 4 - Independence Day, office closed
- 6 - Countywide Sewing Group
- 8 - Horse Show in Lawrence
 - Dog Club Dog Show at Jo. Co. Fairgrounds
- 11 - District Horse Show in Lawrence
- 13 - Countywide Sewing Group
- 14 - Livestock Grant/Mentor applications due
- 15 - Mr. & Miss 4-H Interviews and Presentations
 - State Fair Grand Drive entries due
- 20 - Countywide Sewing Group
- 26 - Entries due for exhibits judged during fair
 - Beef, Goat, Sheep and Swine Stall Requests and Tag Numbers due

Check out www.johnson.k-state.edu/4-h/forms-resources for the 2017 4-H calendar.

K-STATE

Research and Extension

Johnson County

Cooperative Extension Service Johnson County

K- State Research And Extension

11811 S. Sunset Dr. Suite 1500

Olathe, KS 66061-7057

(913) 715-7000

"Kansas State University Agricultural Experiment Station and Cooperative Extension Service." K-State Research and Extension is committed to making its services, activities and programs accessible to all participants. If you have special requirements due to a physical, vision or hearing disability, please contact the Extension Office at (913) 715-7000. K-State Research and Extension is an equal opportunity provider and employer.

Contact Us!

Lee Sigley, 4-H Agent -
lee.sigley@jocogov.org

Amanda Fraunfelter, 4-H Program Manager -
amanda.fraunfelter@jocogov.org

Christin Bartels, 4-H Office Professional -
christin.bartels@jocogov.org

Clover Clips Submission Deadline

The deadline for submissions for Clover Clips will be on the 15th of each month. If that date falls on a weekend please check the 2017 4-H Calendar at www.johnson.k-state.edu/4-h/forms-resources for the deadline for that month. If you have a submission that you would like to have considered for an edition of Clover Clips please send it to Christin at christin.bartels@jocogov.org.

Johnson County 4-H is now on Twitter!

Follow [@jocoks4h](https://twitter.com/jocoks4h).



Johnson County 4-H on Facebook

'Like' our Facebook page to get the most up-to-date information and news about the happenings of Johnson County 4-H! Visit www.facebook.com/JohnsonCountyKS4H to like our page.

Leader Update

4HOnline Enrollment for New Families

The 4HOnline system has been set up to not allow any changes to 4-H members' projects after May 1. New families can still enroll in 4HOnline, but they will be stopped at the last section which is where they would choose their projects. If you have a new family in your club enrolling, please tell them to fill out all the sections completely and then contact Christin when they get to the Projects section. The State 4-H office has made a step by step brochure to help new families enroll. We have posted the brochure on our website at www.johnson.k-state.edu/4-h/forms-resources/. As always, if you have any questions about the 4HOnline system do not hesitate to contact your 4-H staff.

Livestock T-shirt Orders

The Johnson County Fair Association requires all livestock exhibitors to wear Johnson County Fair t-shirts when exhibiting livestock at the fair. The fair association is changing colors of the shirts this year, requiring the purchase of new show shirts for the 2017 year. This year's shirt will be yellow in color. The cost is \$7 per shirt. Each 4-H club will need to fill out the order form posted at www.johnson.k-state.edu/4-h/project-club-resources/leader-resources.html and mail it to Matt Meek with proper payment by **June 15**. Please send only one order form per club. Orders will be available for pick-up by club leaders at the Johnson County Fair office on the July 22 and July 29 workdays.

Additional Livestock T-shirt Pick-up Dates

If you would like to pick-up your club's t-shirts on another day, you can coordinate pick-up with the Fair office. The Fair office will be open 8 a.m.-12 p.m. July 22 and July 29, as well as the week before fair starting Wednesday, July 28, from 10 a.m.-3 p.m. each day. The Fair office phone number is 913-856-8860.

Project Leaders and Volunteers must be Registered Volunteers

This is a reminder that project leaders and volunteers must be Registered Volunteers in order to volunteer for your club. Please help us to make sure everyone volunteering in your club has completed the necessary steps. We are also asking that all volunteers create profiles in 4HOnline so that you as a club leader can see the status of each of your volunteers. For more information on the Volunteer Screening process visit www.johnson.k-state.edu/4-h/volunteers/.

Club Leader Resources Page

Don't forget to check out the Club Leader Resources page at www.johnson.k-state.edu/4-h/project-club-resources/leader-resources.html.