



Clover Clips

A newsletter for Johnson County 4-H families.

May 2016 Issue

Page 1

- * May 1st & 2nd Deadlines!
[Annual Fair Edition](#)
[Pages 2 - 4](#)

Page 4

- * Save these dates...

Page 5

- * Livestock Nomination Info
- * New Archery SPIN Club
- * Online Ear Tag & Nomination Form Info
- * YPQA+ Clarification
- * Tailwaggers Dog Show

Page 6

- * Fantastic 4-H Camp Paperwork DUE
- * Volunteer Orientation/Renewal
- * Wild Clover Camp
- * Livestock Grant/Mentor Program Applications

Page 7

- * Spring Livestock Shows
- * Horse Show Dates

Page 8

- * State Photography Events
- * KSU Horse Judging Camp
- * Campference
- * Campference Scholarship
- * Geology Field Trip

[Reporter's Corner](#) [Pages 9 - 12](#)

Page 13

- * May/June Calendar

Leader Update

Page 14

- * 2016 Enrollment & Participation Forms
- * Livestock T-shirt Orders
- * Club Leader Resources

Page 15

- * Requirements for Club Volunteers

4-H Families,

May flowers are in full bloom and 4-H projects are on their way to completion for fair. Summer is full of 4-H programs from county to the state level. If your family has any questions about opportunities please contact us and we would be happy to discuss the variety of 4-H programs. -Tara

May 1 & 2 Deadlines!!!

Due May 1:

Enrollment Status and Adding/Dropping Projects

The project add/drop deadline for new and returning 4-H'ers is May 1. **4-H members must have an Active status in 4HOnline and be enrolled in the project by May 1 to be eligible to exhibit in the corresponding project area at the Johnson County Fair.** Project enrollment is an important component of the project experience. 4-H families can update this information any time in 4HOnline by simply editing the 4-H member's profile. This option will be available until midnight on May 1 and then after that the system will not allow any changes to be made to a 4-H member's projects. If you have questions please contact your club leader or the Johnson County 4-H office.

Due May 2:

KJLS and KSF Market Beef Nominations

4-H members planning on showing their animals at the Kansas Junior Livestock Show and/or the Kansas State Fair need to have nominations to the Youth Livestock office by May 2. Information pertaining to livestock nominations can be found at www.YouthLivestock.KSU.edu.

Horse Identification and Horseless Horse Certificates

All Horse Identification Certificates and Horseless Horse Certificates are due to the Extension office by 5 p.m. on May 2 this year (due to May 1 falling on a Sunday). Appropriate forms can be found at www.johnson.k-state.edu/4-h/events-programs/livestock.html.

4-H Horse Snaffle Bit Projects

Horse snaffle bit projects are due to the local Extension office by May 2 due to May 1 falling on a Sunday. Along with the nomination, the 4-H member must submit the Horse Identification Certificate and a \$10 fee. Three-year-old snaffle bit projects must have been nominated the previous year and do not have to have been shown to be re-nominated. For more information about the Snaffle Bit project see the Kansas 4-H Horse Show Rule Book.

Fair Edition

2016 Johnson County 4-H Fair Book

The electronic version of the 2016 Johnson County Fair Book will be available to view at www.jocokansasfair.com/Fair%20Book.htm.

County Fair Entries

4-H entries for exhibits judged during the county fair will be due July 27. All entries for home environment, fiber arts, clothing construction, fashion revue, and dog show will be due on July 1. Late entries will not be accepted and if a 4-H'er does not meet the deadline they will not be allowed to have their item or project judged in the 4-H division.

All livestock exhibitors will be required to submit a stall request by July 1. All sheep, swine, beef and goat exhibitors will be required to submit tag numbers by the July 27 deadline. If your family has weighed and tagged their animals under a family nomination, you will be required to enter the tag number(s) with the 4-H member's name who is exhibiting the animal by July 27. Livestock exhibitors: you must enter in showmanship if you plan on exhibiting in showmanship. **NEW THIS YEAR: All livestock entries must be accompanied at check-in with a printed entry tag. In the event a 4-H'er forgets to bring their entry tag, the Fair office will be available to print it.**

Only online entries are accepted. The entry system will open June 1 and can be accessed through the Johnson County Fair website at www.jocokansasfair.com. If assistance is needed in making online entries please contact the Extension office or the Fair office. It is highly recommended that you print off your entry confirmation.

After the entry deadline adding a class/entry is not an option. If you are not sure about what you are taking to the fair, please wait until closer to the deadline to make your entries. This will help keep dropped entries to a minimum as the Fair Board has to pay for each dropped entry.

In order to save time with project check-in at the fair, 4-H'ers are encouraged to print their entry tags at home.

Mr. and Miss 4-H

The Johnson County Mr. and Miss 4-H Program recognizes young people for the leadership and commitment they have contributed to the 4-H program and their communities. All 4-H'ers who have been a member for at least three years and are at least 13 (as of January 1, 2016) are eligible to apply. Applications are due to the Extension office by June 24. Interviews and presentations are scheduled for Saturday, July 9. Coronation will take place during the Fashion Revue on July 28. All application documents and additional information about Mr. and Miss 4-H are posted at www.johnson.k-state.edu/4-h/events-programs/mr-and-miss-4-h.html. Questions about Mr. and Miss 4-H can be directed to Susan Rogers at 913-226-6167 or srgateway2000@gmail.com.

Food and Clothing Labels

Food labels (including those for Food Preservation) are available to pick up at the Extension office as well as on the Johnson County 4-H website at www.johnson.k-state.edu/4-h/events-programs/johnson-county-fair.html to print off at home. Clothing labels can be made by typing, or printing in ink, on a 3" x 5" piece of white cloth: Class Number, Name, and Address. Please refer to your department's rules in the fair book regarding labels.

Fair Edition

Photo Mats

The Extension office has photo mats available for Photography project members to purchase. Each mat is \$1.25. Photos exhibited in the 4-H Photography division at the county fair will require a photo mat. You may pick up photo mounting directions and labels at the Extension office. They are also posted at www.johnson.k-state.edu/4-h/events-programs/johnson-county-fair.html.

4-H Foods Judging

The 4-H foods judging will take place at Wheatridge Middle School from 2-8 p.m. on Monday, August 1.

Canning and Preservation fair classes: 4-H'ers should only use CLEAR canning jars for the fair. Save the colored blue and green canning jars for home use. Colored jars may have to be opened to check canned ingredients and if it is opened it cannot go on for further judging. This is a food safety issue.

Cloverbuds Show and Share

Enrolled Cloverbuds are invited to participate in Show and Share on Tuesday, August 2 from 10 a.m.-1 p.m. in the 4-H building. This is a reminder that Cloverbuds are not eligible to compete in the 4-H division at the fair. Full membership starts at age 7. Cloverbuds can bring a maximum of two projects to show and share. Each Cloverbud will sign up for a 15 minute time slot. A signup sheet will be available Monday evening and Tuesday morning during project check-in inside the 4-H building. For a list of approved pets for Cloverbuds, please visit <http://www.kansas4-h.org/p.aspx?tabid=399> and choose the Cloverbuds Policies link. Projects that are reasonable in size and are not living/breathing will be displayed in the 4-H building and available for pick up Sunday, August 7.

Project Check-in

Projects will be checked in on Monday, August 1, from 6:30-9 p.m. and again on Tuesday from 8-10 a.m. Projects not checked in by 10 a.m. on Tuesday will not be eligible to be exhibited. Please plan on arriving before 10 a.m. to have ample time to check in all of your projects. Livestock exhibitors, please refer to the fair book for your check-in time.

Project Pick Up

All 4-H livestock and horses can be removed from the fairgrounds after 6 a.m. Sunday, August 7. All remaining exhibits will be released at 9 a.m. **4-H'ers must pick up their entries or make arrangements with another 4-H'er to pick up their entries by Sunday morning at 9:30 a.m.** If a 4-H'er does not pick up their entries it is the responsibility of the Club Leader to collect the rest of the club's entries. All 4-H entries and premium money will be available for pick up after the fairgrounds have been cleaned. It is expected that 4-H exhibitors help with fair clean-up.

4-H Food Stand

Each year the Johnson County 4-H Council has a food stand at the county fair. This is our largest fundraiser for the County Council. County Council funds Achievement Celebration, transportation for 4-H Camp, Discovery Days, trip scholarships for 4-H'ers, Family Night and Officers Training, County and Regional Club Days and much more. A two hour shift at the food stand is a small price to pay for a year of all the great county-wide activities!

Fair Edition

Livestock T-shirts

All 4-H'ers exhibiting beef, sheep, goats or swine are required to wear blue jeans and the official Johnson County Fair Livestock Show t-shirt. The color this year is the same as last year. Each livestock exhibitor will need to wear this shirt for their respective show(s). If you did not purchase a t-shirt last year, please place your order through your club leader.

******Club leaders, please see the Leader section on page 14 for details on how to place your club's order. T-shirts are \$6 each.**

Livestock and Project Auction

Livestock Auction: Exhibitors must turn in auction forms to sell their livestock to the Fair Office by 12 p.m. Friday, or 30 minutes after the conclusion of the beef show, along with a W-9 IRS form.

Project Auction: Project auction forms must be turned in by 12 p.m. on Thursday along with a W-9 IRS form, no exceptions.

It is against policy of the Johnson County Fair for any livestock or projects sold at the 4-H/FFA auction to be shown at any other county, state or national competition. See the 4-H/FFA Livestock Auction section in the Johnson County Fair Book for more details about the Livestock and Project Auction.

State Fair Entries

All 4-H exhibits that receive a purple ribbon are eligible to enter at the Kansas State Fair providing there is a comparable department at the State Fair. 4-H'ers who qualify to exhibit at the State Fair may sign up in the Fair Office from 3-5 p.m. Thursday, August 4 and Friday, August 5. 4-H members must be 9 before January 1, 2016 to enter. All entries for the Kansas State Fair must be made with the Extension office by 5 p.m. Tuesday, August 16. **Please note:** beef, sheep, swine and meat goat entries for the Kansas State Fair are due by July 15 and Horse Show entries are due by August 1.

SAVE THE DATE!

Johnson County 4-H Spring Rabbit Show will be June 4 at the Johnson County Fairgrounds.

Dr. Bob Hines Kansas Youth Swine Classic will be June 8-9 at the Riley County Fairgrounds.

State 4-H Horticulture Judging Contest will be August 20 at Kansas State University.

AKSARBEN Stock Show & Rodeo will be September 22-26 in Omaha, NE.

Kansas 4-H SpaceTech & Cosmosphere Overnight Experience #1 will be Sept. 30-Oct. 1 in Hutchinson.

48 Hours of 4-H Service Challenge will be October 8-9.

2017 Kansas 4-H Ambassador Training will be February 24-25 at Rock Springs 4-H Center.

Kansas 4-H SpaceTech & Cosmosphere Overnight Experience #2 will be Mar. 31-Apr. 1 in Hutchinson.

County Project Information

2016 Livestock Nomination Materials

The updated 2016 state livestock nomination materials have been released. Information, updates, and forms may be found on the youth livestock website at www.youthlivestock.ksu.edu under “Nominated Livestock”. **All state livestock nominations MUST be submitted using the updated 2016 forms in order to be accepted.** There are a handful of changes and updates to the process for 2016, but the most notable modifications are that all swine nominations will require submission of ear notches and all sheep and goat nominations require the scrapie tag #. All species will continue requiring DNA as part of the nomination process. A “Rookie Guide” has also been created to help guide new families through the nomination process with as little stress as possible. Market Beef nominations are typically due on May 1, however, that is a Sunday for 2016. So, market beef nominations that are postmarked May 2 will be accepted this year ONLY. All other specie nominations will continue to be due on June 15th.

New Archery SPIN Club

A new “Archery for Fun” 4-H SPIN Club will be coming soon. This SPecial INterest club will be available for youth who have completed the 4-H Archery SPIN Club and are looking to learn more about archery. More details will be available soon! Stay tuned.

Livestock Nomination Forms and Ear Tag Pre-payment

For your convenience we have created a prepay option for ear tags so you don't have to worry about bringing cash or checks with you to weigh-in. It should also help speed up the process. Tags are \$3 each and the link to prepay can be found at www.johnson.k-state.edu/4-h/events-programs/livestock.html. Please prepay before 3 p.m. on Friday, June 3.

Also found on that page is a link to the livestock nomination forms. These are required if you plan to participate in the Kansas State Fair livestock shows or Kansas Junior Livestock Show. If you fill out the google doc form we will complete the nomination form for you and sign it prior to weigh-in. Just click on the “Online Nomination Forms” link to complete those. Please also have these completed before 3 p.m. Friday, June 3.

Youth Pork Quality Assurance Plus Certification Date Clarification

Youth PQA Plus is required by many shows, but more specifically the Kansas State Fair and Kansas Junior Livestock Show. All youth exhibiting swine at one or both events must have a valid YPQA+ number by June 15.

Local Opportunities

5th Annual Miami-Waggers 4-H Invitational Dog Show

An informational flyer and entry form for the Miami-Waggers 4-H Invitational Dog Show is posted at www.johnson.k-state.edu/4-h/events-programs/countywide-projects.html. The event will be held on Saturday, June 25 at the Johnson County Fairgrounds in Gardner.

Local Opportunities

Payment and Forms Due for Fantastic 4-H Camp

If a camper's Health & Medication Form has not already been turned in to the Extension office, please do so immediately. Please note, even if your child is not taking any medication, you must still fill out the Health & Medication Form. Payment for camp is due at this time as well. Payment and completed forms are required in order for youth to attend camp. The Health & Medication form can be found at www.johnson.k-state.edu/4-h/events-programs/camps.html. If you have any questions about the forms or payment, please contact Christin.

Volunteer Orientation and Renewal

One part of the Volunteer Screening Process is the orientation. There is an online orientation available (see information below about the new online orientation option), as well as in-person orientations held at the Extension office. The next in-person orientation is scheduled for Thursday, May 19, from 6:30-8 p.m.

To register, complete the form at <http://goo.gl/forms/hLuEDRo9VL>. Still have questions about becoming a Registered 4-H Volunteer? Please call the office or visit www.johnson.k-state.edu/4-h/volunteers/ for more details.

Online Volunteer Orientation and Renewal

The 4-H Volunteer Online Orientation has been re-launched through the 4HOnline system. Individuals will have to set up an account in 4HOnline, if they have not done so already, before the online orientation can be completed. The Volunteer Application and Volunteer Renewal can also be completed online. Visit the Johnson County 4-H Volunteer webpage at www.johnson.k-state.edu/4-h/volunteers/ and click on "Application", "Orientation", or "Renewal" for more details about each step in the process. Please contact your Johnson County 4-H staff if you have any questions.

Wild Clover 4-H Camp

There is a new overnight camp available this year for youth ages 7-9 years old (as of January 1, 2016)! It is called Wild Clover 4-H Camp and will be held June 24-25, 2016 at Wildwood Outdoor Education Center in LaCygne, Ks. Wild Clover 4-H Camp is a two-day, overnight adventure for youth wanting to get a mini camp experience. There will be swimming, fishing, creating arts and crafts, hiking, and singing around a campfire. The cost is \$85 per camper and transportation is not provided. The registration link can be found at www.johnson.k-state.edu/4-h/events-programs/camps.html and closes June 1. The camp is limited to 40 campers.

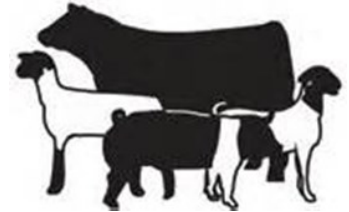
Livestock Grant and Mentor Applications

The Johnson County Livestock Association will again this year provide funding for their 4-H Livestock Grant and Mentor Program. The Grant Program will award \$1,100 to a 4-H'er enrolled in the beef project and \$300 to a 4-H'er in each of the sheep, swine, and goat projects. Experienced 4-H'ers who apply to the Mentor Program could earn \$500 for the beef project and \$300 in each of the sheep, swine, and goat projects. If you would like an opportunity to apply for the Grant Program or Mentor Program, please fill out an application by the July 15 due date. Applications will be available at the Extension office or online at www.johnson.k-state.edu/crops-livestock/johnson-county-livestock-association.html.

Local Opportunities

2016 SPRING LIVESTOCK SHOWS

Registration details and more information about each show can be found at www.johnson.k-state.edu/4-h/events-programs/livestock.html.



Spring Goat Show - June 4

The Spring Goat Show will be held Saturday, June 4, at the Johnson County Fairgrounds, beginning at 9 a.m. Pre-registration is due by May 25. The entry fee is \$10 per head, then goes up to \$20 per head after May 25. Weigh-in will be 7-8 a.m. Saturday morning. 4-H Goat project members not showing in the Spring Goat Show will be allowed to weigh their animals from 5-7:30 p.m. on Friday, June 3 at the Johnson County Fairgrounds.

Spring Sheep Show - June 4

The Spring Sheep Show will be held Saturday, June 4, at the Johnson County Fairgrounds, beginning 30 minutes after the conclusion of the goat show. Pre-registration is due by May 25. The entry fee is \$10 per head, then goes up to \$20 per head after May 25. Weigh-in will be 8-9 a.m. Saturday morning. 4-H Sheep project members not showing in the Spring Sheep Show will be allowed to weigh their animals from 5-7:30 p.m. on Friday, June 3 at the Johnson County Fairgrounds.

Spring Swine Show - June 5

The Spring Swine Show will be held Sunday, June 5, at the Johnson County Fairgrounds, beginning at 10 a.m. Pre-registration is due by May 25. The entry fee is \$10 per head, then goes up to \$20 per head after May 25. Weigh-in will be 7-9 a.m. Sunday morning. 4-H Swine project members not showing in the Spring Swine Show will be allowed to weigh their animals from 5-7:30 p.m. on Friday, June 3 at the Johnson County Fairgrounds.

Spring Bucket Calf Show - June 5

The Spring Bucket Calf Show will be held Sunday, June 5, at the Johnson County Fairgrounds, beginning 30 minutes after the conclusion of the swine show. Pre-registration is due by May 25. The entry fee is \$10 per head, then goes up to \$20 per head after May 25. Weigh-in will be 8-10 a.m. Sunday morning. 4-H Bucket Calf project members not showing in the Spring Bucket Calf Show will be allowed to weigh their animals from 5-7:30 p.m. on Friday, June 3 at the Johnson County Fairgrounds.

2016 Horse Shows

Horse Shows Sponsored by the Johnson County 4-H Horse Club:

- Saturday, May 21 at Douglas County Fairgrounds Indoor Arena.
- Saturday, June 25 at Douglas County Fairgrounds Indoor Arena. (Rodeo Royalty Horsemanship pattern will be judged.)
- Saturday, July 23 at Johnson County Fairgrounds. (No Bling Show. Fairground Cleanup/Lock In will follow the show.)
- Saturday, August 27 KSHSC Fundraiser Horse Show at Douglas County Fairgrounds Indoor Arena. (Sponsored by Johnson County 4-H Horse Club.)

East Central District Horse Show

The 2016 East Central District Horse Show is scheduled for July 5, at the Douglas County Fairgrounds in Lawrence. Deadline for entries is June 15. The entry form is posted on the Johnson County 4-H website at www.johnson.k-state.edu/4-h/events-programs/livestock.html.

State Opportunities

State 4-H Photography Events

The Photo Action Team will host two Shutterbug events this spring. A variety of workshops will be offered at both events.

- Shutterbugs at the Zoo, Saturday, May 7, 2016 at the Lee Richardson Zoo in Garden City. More information about the Shutterbug events is posted on the State 4-H Photography website at <http://www.kansas4-h.org/events-activities/conferences-events/photography/index.html>.

KSU Horse Judging Camps

The dates have been set for the 2016 KSU Horse Judging Camps. The Beginning Section will be held on Tuesday, June 7 and the Advanced Section on Wednesday and Thursday, June 8 and 9. The camps will be held in Weber Hall on the K-State campus. Informational brochures on both camps are posted on the Johnson County 4-H website at www.johnson.k-state.edu/4-h/forms-resources/. Please note that camp registration is due by May 13, 2016 and will be limited to the first 30 participants.

Campference 2016

4-H Campference will be held June 24-27 at Rock Springs 4-H Center and is for youth ages 12-14 (before January 1, 2016). Participants will experience the feel of a conference, while enjoying the 'camp' activities Rock Springs 4-H Center has to offer. This is a great transitional opportunity as tweens go from being a camper to attending educational conferences. 4-H Campference will feature workshops about opportunities in the 4-H program and how to better interact with others. Participants will meet other youth from around the state of Kansas.

Register early as the space will fill on a first come basis and Campference was full in 2014 and 2015! Register online by May 15 (or earlier because it will close when it is full) and payment must be at the Johnson County Extension office by May 15. Registration and detailed information is on the State 4-H website at www.kansas4-h.org/events-activities/camping/campference/index.html.

Campference Scholarship Opportunity!

The 4-H Ambassadors are offering scholarships to attend Campference. If you are ages 12-14, this is a great state event just for you! Ambassadors have a limited number of scholarships to award to 4-H members who have never attended Campference. The scholarship will be awarded for half of the registration fee. Send us your application and encourage your 4-H friends to join the fun too! The application will be posted at www.johnson.k-state.edu/4-h/events-programs/camps.html. **Applications are due to Christin by 5 p.m. on May 23.**

2016 State 4-H Geology Field Trip

The State 4-H Geology Field Trip will be held June 10-12, 2016. This year one trip, based in Minneola, will be offered. Participants will collect Cretaceous through Quaternary rocks, minerals and fossils from the Champion Draw area of Kiowa County through the chalk beds of Gove County. The state trip provides excellent opportunities for youth in the Geology project to learn more about the geology of Kansas, interact with trained geologists and geology leaders, go on collecting trips, participate in quiz bowl and judging contest events, and attend workshops. Everyone attending the trips (adults and youth) must register online. Detailed information about the trip is posted on the Geology Field Trip page at www.kansas4-h.org/events-activities/conferences-events/geology-field-trip/. The registration deadline is May 22.

REPORTER'S CORNER

Johnson County Livestock club continued in their effort to help the community by donating to the farmers in western Kansas devastated by the wildfires. Kaylee, Kenton and Daniel traveled to Tonganoxie, Kansas to present a check for \$250 to the Kansas Livestock Association. With the club's donation KLA was close to their goal of \$40,000. The money will be used to rebuild fence and barns.

By Kaylee King, Johnson County Livestock Club Reporter



The officers for the Happy Helpers 4-H Club for 2015 – 2016 are as follows: President – Jordan; Vice President – Linnea; Secretary – Hadley; Treasurer – Shelby; Reporter – Kristin; Parliamentarian – Hannah; Historian – Mikayla; Song Leader – Cora; County Council Representatives – Linsey and Jordan; and County Council Alternates – Shelby and Linnea. The club has chosen to collect pop tabs for the Ronald McDonald Houses in the Kansas City area as their year-long community service project. They will deliver all the pop tabs and tour one of the Ronald McDonald Houses this summer.

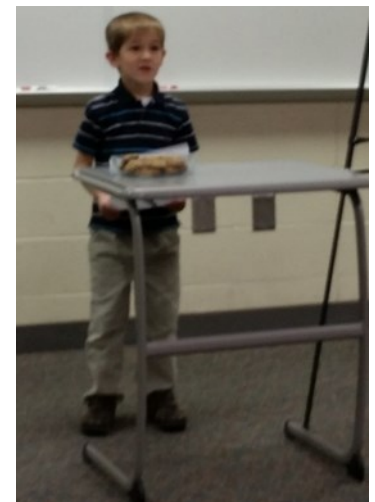
Members of the Happy Helpers 4-H Club participated in County 4-H Club Day on February 13 at Wheatridge Middle School in Gardner. Kristin sang and received Top Purple in the Sr. Vocal Solo category. Cora participated in 3 events; she received a Top Purple in Jr. Oral Interpretation, a Top Purple in Jr. Dance Solo, and a participation ribbon in Cloverbud Show and Share. Mikayla entered Sr. Impromptu for her first time and received a Blue ribbon. Hannah received a Purple in the Intermediate Piano Solo category. Linsey received a Top Purple for her contemporary Sr. Dance Solo. Hadley participated in the Intermediate Demonstration/Illustrated Talk and received a Blue ribbon. George received a participation ribbon for his Cloverbud Show & Share. Our Vocal Ensemble sang two songs and received Top Purple.



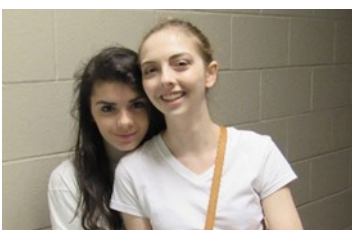
Hannah playing piano.



Hadley speaking about dog tug toys.



George -- Show & Share



Mikayla & Kristin, Room Monitors

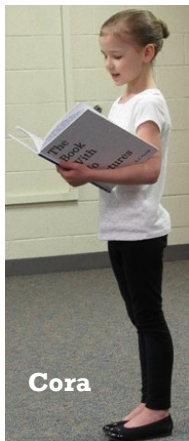
Kristin and Mikayla received a perfect score in the senior division of the FACS Judging at County Club Day. Kristin will now compete in the FACS Judging at Discovery Days at Kansas State on June 1. Kristin and Mikayla also served as room monitors for the Vocal and Gavel Games rooms and the Senior Demonstration/Illustrated Talks room.

(continued on page 10)

REPORTER'S CORNER

Every member in the Happy Helpers 4-H Club participated in Regional Club Days on March 19 at Wheatridge Middle School in Gardner. They qualified, because they had received Top Purple in one or more of their events at County 4-H Club Days in February.

Cora participated in Jr. Dance Solo and received a Blue ribbon for her "Let It Go" ballet dance. She also did Jr. Oral Interpretation with *The Book with No Pictures* and received a Purple ribbon. Linsey participated in Sr. Dance Solo and received a Purple ribbon for her contemporary dance to "People Help the People" by Birdy. Kristin, Sr. Vocal Soloist, sang "Piercing Eyes" by Franz Joseph Haydn and received a Purple ribbon. The club's 10-member Vocal Ensemble sang "Candle on the Water" from *Pete's Dragon* and "Go Tell It on the Mountain" and received a Blue ribbon. Members of the Vocal Ensemble were Cora, Jordan, Kristin, Mikayla, Hannah, Linnea, Shelby, Hadley, Cameron, and Dylan.



Cora



Linsey



Kristin



Vocal Ensemble – Hadley, Dylan, Jordan, Cameron, Kristin, Mikayla, Hannah, Shelby, Cora, and Linnea

Articles by Kristin Gaddis, Happy Helpers 4-H Club Reporter

In March, the Great Plains 4-H Club got the opportunity to go to the Spring Hill Police Department for a citizenship project. They baked cookies and made cards at the house of one of the club members, and had a meeting about some of the things that they would like to do for the club's citizenship project. When their meeting was done they delivered the cookies to the police station and got to go on a tour of the newly built police facility. They learned a lot about the different jobs of the police officers and even got to see the inside of a police car! It was a really fun way to honor some of the leaders in the community.



By Leah Kwasiborski, Great Plains Club Reporter



REPORTER'S CORNER

Morning Glory visits Gardner Historical Museum By Ben Burling, Morning Glory Club Reporter

On March 28, 2016, the Morning Glory 4-H Club toured the Gardner Historical Museum and the Bray House for an Educational Tour. Emmy organized our trip to the museum. The Morning Glory club organizes an educational tour each 4-H year for the club to enjoy together. The Historical Museum was built in the Spring of 1893, Morning Glory members learned about the history of Gardner, Kansas. We looked at the artifacts local residents have loaned and donated to the museum. The Bray House was built in 1952 and shows what was popular in the 1950's, including a phone with a cord! Things have changed a lot over time.



Morning Glory Club members Ally and Vasillia stop for a photo by the Museum sign.



Cooper, Brennan and Joseph listening to the museum volunteer share facts about Gardner.

The Oxford Hustlers Reporter, Lillian Haney, had the opportunity to interview the club's graduating senior, Grace. Grace has been a member of the Oxford Hustlers 4-H club for 11 years and is a wealth of knowledge about all things 4-H. She is a Key Award Winner, Vice-President of County Council and an Ambassador of 4-H.

I was curious how someone stays involved for so many years. Grace said, "4-H is a family thing for me. My dad grew up on a farm and was always very involved in 4-H, and his father was in 4-H as a child as well. My grandpa was even the community club leader for my dad's club. My dad used to show a lot of livestock and won a lot of competitions for it." When asked what her favorite projects in 4-H were, Grace responded that photography and public speaking were her favorites. "I enjoy photography because you can capture unique moments that you experience and share the beauty of it with others. I also really enjoy public speaking because it has really built my confidence and given me the ability to communicate with others well." She has placed 1st in the State Photography Judging contest and most recently won a Champion ribbon for her lot in photography at fair.



(continued on page 12)

REPORTER'S CORNER

(continued from page 9)

Grace shared a couple of her favorite memories of 4-H. She enjoyed Discovery Days for the learning opportunities while having fun and meeting new people. She also enjoyed Club Days for the freedom and variety of choices in demonstrating her talents, while getting honest feedback from the judges to continue growing in areas that interested her. Winning top purple for her cello performance at Club Days was another highlight.

My parting question to Grace was what she would share with a new 4-er. Her response was reflective of the strong leader she has been in our club: "Always remember that competitions like the fair and club days are just learning opportunities. Don't be afraid to fail, because that is how you learn to improve. If you get a bad ribbon, that is okay because the most important thing is to take the feedback and learn from it."

Congratulations to Grace on her upcoming graduation!



Prairie Moon 4-H Club competed at Regional Club Day March 19, 2016 in Gardner, Kansas. They performed The Glow In the Dark Dance. The dancers made a glowing appearance and the team received the alternate top purple for the event!

By Emily Gehlen, Prairie Moon Club Reporter

Club Reporters, Your Article Can Be Featured Here!

Attention all club Reporters! Does your club have some exciting news or photos to share? Is there something you think the rest of the county should know that's happening in your club? Then we have a new opportunity for you. The *Reporter's Corner* is a new section within *Clover Clips* that features 4-H club Reporters' articles/pictures. We would like to ask you to limit the article to 200 words and it must be submitted to Christin by the *Clover Clips* submission deadline. Check the 4-H Calendar on the Johnson County 4-H website for each month's submission deadline.

May

- 1 - Deadline to Add or Drop projects and have an Active status in 4HOnline
- 2 - Horse ID Certificates and Horseless Horse Certificates due in office
 - Beef Nominations due to Youth Livestock office
 - County Council meeting
- 9 - Deadline to register for the National 4-H Congress Centennial Delegate drawing
- 11 - Johnson Co. Fair Rodeo Royalty meeting
- 19 - Volunteer Orientation
- 21 - Johnson Co. 4-H Horse Club Horse Show (Douglas County Fairgrounds)
- 23 - Campference Scholarship application due
- 25 - Spring Goat, Sheep, Swine and Bucket Calf Shows pre-registration due
- 30 - Memorial Day, office closed

June

- 1 - Wild Clover 4-H Camp registration closes
 - Online fair entry system opens
- 3 - Online Nomination Forms and Ear Tag Pre-payments due by 3 p.m.
 - Weigh-in for Goat, Sheep, Swine and Bucket Calf project members **not** showing in the Spring Show
- 4 - Spring Goat and Sheep Shows
- 5 - Spring Swine and Bucket Calf Shows
- 6 - County Council Officers meeting
- 15 - Commercial Heifer, Swine, Sheep and Meat Goat Nominations due to Youth Livestock office
 - District Horse Show entries due
- 24 - Mr. and Miss 4-H applications due to office
- 25 - Miami-Waggers Dog Show
 - Johnson Co. 4-H Horse Club Horse Show (Douglas Co. Fairgrounds)

Check out www.johnson.k-state.edu/4-h/forms-resources for the 2016 4-H calendar.

K-STATE

Research and Extension

Johnson County

Cooperative Extension Service Johnson County

K- State Research And Extension

11811 S. Sunset Dr. Suite 1500

Olathe, KS 66061-7057

(913) 715-7000

"Kansas State University Agricultural Experiment Station and Cooperative Extension Service." K-State Research and Extension is committed to making its services, activities and programs accessible to all participants. If you have special requirements due to a physical, vision or hearing disability, please contact the Extension Office at (913) 715-7000. K-State Research and Extension is an equal opportunity provider and employer.

Contact Us!

Tara Markley, 4-H Agent -
tara.markley@jocogov.org

Amanda Fraunfelter, 4-H Program Manager -
amanda.fraunfelter@jocogov.org

Christin Bartels, 4-H Office Professional -
christin.bartels@jocogov.org

Clover Clips Submission Deadline

The deadline for submissions for Clover Clips will be on the 15th of each month. If that date falls on a weekend please check the 2016 4-H Calendar at www.johnson.k-state.edu/4-h/forms-resources for the deadline for that month. If you have a submission that you would like to have considered for an edition of Clover Clips please send it to Christin at christin.bartels@jocogov.org.

Johnson County 4-H is now on Twitter!

Follow [@jocoks4h](https://twitter.com/@jocoks4h).



Johnson County 4-H on Facebook

'Like' our Facebook page to get the most up-to-date information and news about the happenings of Johnson County 4-H! Visit www.facebook.com/JohnsonCountyKS4H to like our page.

Leader Update

4HOnline Enrollment

The deadline for returning 4-H members to reenroll was November 2. If returning 4-H members have not reenrolled yet, please ask them to do so right away as all correspondences from the 4-H office will now be sent using information from the 2016 enrollments in 4HOnline.

New families may enroll for the 2016 4-H year at any time, but the sooner the better so that they can start receiving correspondences as well.

The State 4-H office has made a step by step brochure for reenrolling which we have posted on our website at www.johnson.k-state.edu/4-h/forms-resources/. We have also posted the State's brochure for enrolling for new families. Please read the brochure to assist your family in reenrolling, and here are a few tips to point out:

- *Log in to your family's existing profile. **DO NOT** create a new family account!*
- *Most data will pre-populate from the 2015 year's data, but make sure you double check and edit items that may have changed from last year. Items like: Volunteer Status (Yes or No), Volunteer Type (i.e. Project Leader, Secretary, etc.), Club, Projects, etc.*
- *If you are a Club Leader or Project Leader you will not be able to log in to your club/project until you have reenrolled and your enrollment has been accepted by our office.*
- *The Participation Form will be filled out online this year as part of the enrollment/reenrollment process, therefore no hard copy form needs to be turned in to the office.*

As always, if you have any questions about the 4HOnline system do not hesitate to contact your 4-H staff.

Participation Forms: A hard copy of the participation form for all members in your club that were Active as of December 9, was handed out during the last Club Leader meeting. If someone enrolls in your club going forward, we will email you a PDF copy of the person's participation form. Please contact Christin or Amanda if you have any questions.

Livestock T-Shirt Orders

All 4-H'ers exhibiting beef, sheep, goats or swine are required to wear blue jeans and the official Johnson County Fair Livestock Show t-shirt. The color this year is the same as last year. Each livestock exhibitor will need to wear this shirt for their respective show(s). 4-H'ers must submit their order (includes t-shirt size and payment) to their club leader.

Cost: \$6 each

Sizes: Youth: Small, Medium, and Large Adult: Small, Medium, Large, and Extra Large.

Club leaders will turn in all orders to Sue Pio by June 30. Make sure to include Club Name, Leader's Name and Leader's cell phone for contacting purposes. Please mail checks (made out to Johnson County Fair) and orders to: **Sue Pio, 20470 Coop Road, Edgerton, KS 66021**. Shirts will be sorted by club name and picked up by a representative of each club from the Fair office.

Club Leader Resources Page

Don't forget to check out the Club Leader Resources page at www.johnson.k-state.edu/4-h/project-club-resources/leader-resources.html.

Leader Update

Project Leaders and Volunteers must be Registered Volunteers

Remember that project leaders and volunteers must be Registered Volunteers in order to volunteer for your club.

There are three types of volunteers:

Direct Volunteer: A volunteer with authority to independently plan and conduct educational experiences for youth with adults present or in a public setting OR whose position puts them in close, ongoing, interaction with youth. (Examples: community or organizational leader, project leader, activity leader, judging team coach, camp counselor, event chaperone, exchange trip chaperone, countywide project leader, chauffeur for any 4-H activities, etc.) **Direct Volunteers are required to complete the Kansas 4-H Volunteer Screening Process.**

Episodic Volunteer: A volunteer helping with a single “episode” or activity (usually with a Registered 4-H Volunteer present). Volunteers who are considered episodic volunteers serve as workshop presenters, judges, guest speakers, etc. **Episodic Volunteers are not required to complete the Volunteer Screening process.**

Indirect Volunteer: A volunteer supporting 4-H events or activities but not working directly with youth. Volunteers who are considered indirect volunteers serve on committees or boards. Examples may include local 4-H Foundation Board members or PDC members who don't interact with youth. **This person is not required to complete the Volunteer Screening process.**

For more information on the Volunteer Screening process visit www.johnson.k-state.edu/4-h/volunteers/.