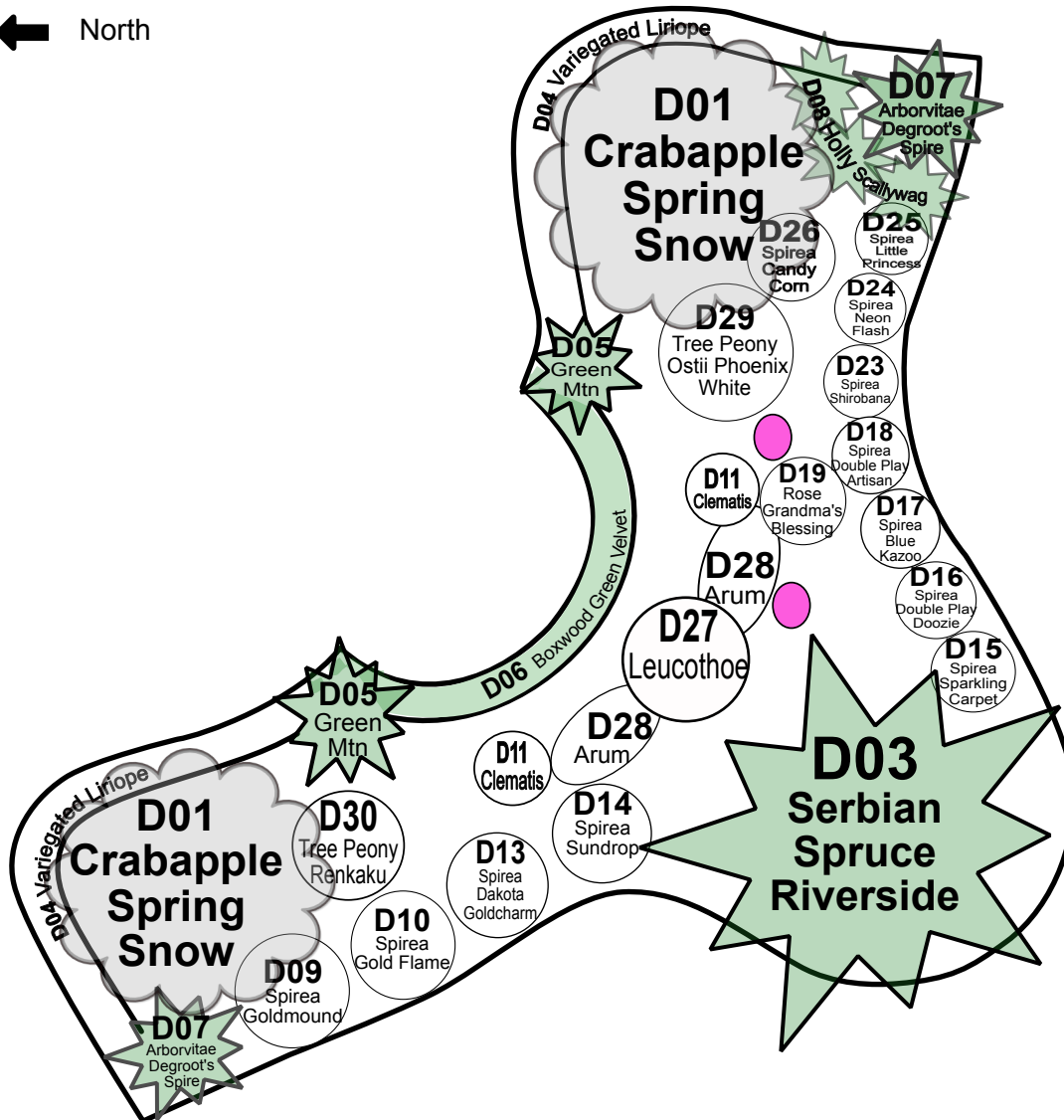


Johnson County Extension Garden Gallery Section D

D



- D01 - Malus 'Spring Snow' - Crabapple
- D03 - Picea omorika 'Riverside' - Serbian Spruce
- D04 - Liriope 'Variegata' - Lilyturf
- D05 - Buxus 'Green Mountain' - Boxwood
- D06 - Buxus 'Green Velvet' - Boxwood
- D07 - Thuja occ. 'Degroot's Spire' - Arborvitae
- D08 - Ilex meserveae 'Scallywag' - Holly
- D09 - Spirea 'Goldmound' - Dwarf Spirea
- D10 - Spirea 'Gold Flame' - Dwarf Spirea
- D11 - Clematis on pillar:
 - A - 'Samaritan Jo' (white)
 - B - 'Brother Stefan' (blue)
 - C - 'Pink Champagne' (pink)
- D13 - Spirea 'Dakota Goldcharm' - Dwarf Spirea
- D14 - Spirea 'Sundrop' - Dwarf Spirea
- D15 - Spirea 'Sparkling Carpet' - Dwarf Spirea
- D16 - Spirea 'Double Play Doozie' - Dwarf Spirea
- D17 - Spirea 'Double Play Blue Kazoo' - Dwarf Spirea
- D18 - Spirea 'Double Play Artisan' - Dwarf Spirea
- D19 - Rosa 'Grandma's Blessing' - Shrub Rose
- D23 - Spirea 'Shirobana' - Dwarf Spirea
- D24 - Spirea 'Neon Flash' - Dwarf Spirea
- D25 - Spirea 'Little Princess' - Dwarf Spirea
- D26 - Spirea Double Play 'Candy Corn' - Spirea
- D27 - Leucothoe fontanensiana 'Rainbow' - Dog Hobble
- D28 - Arum Italicum - Italian Arum (Summer dormant)
- D29 - Tree Peony 'Ostii Phoenix White'
- D30 - Tree Peony 'Renkaku'

● = Daffodils

