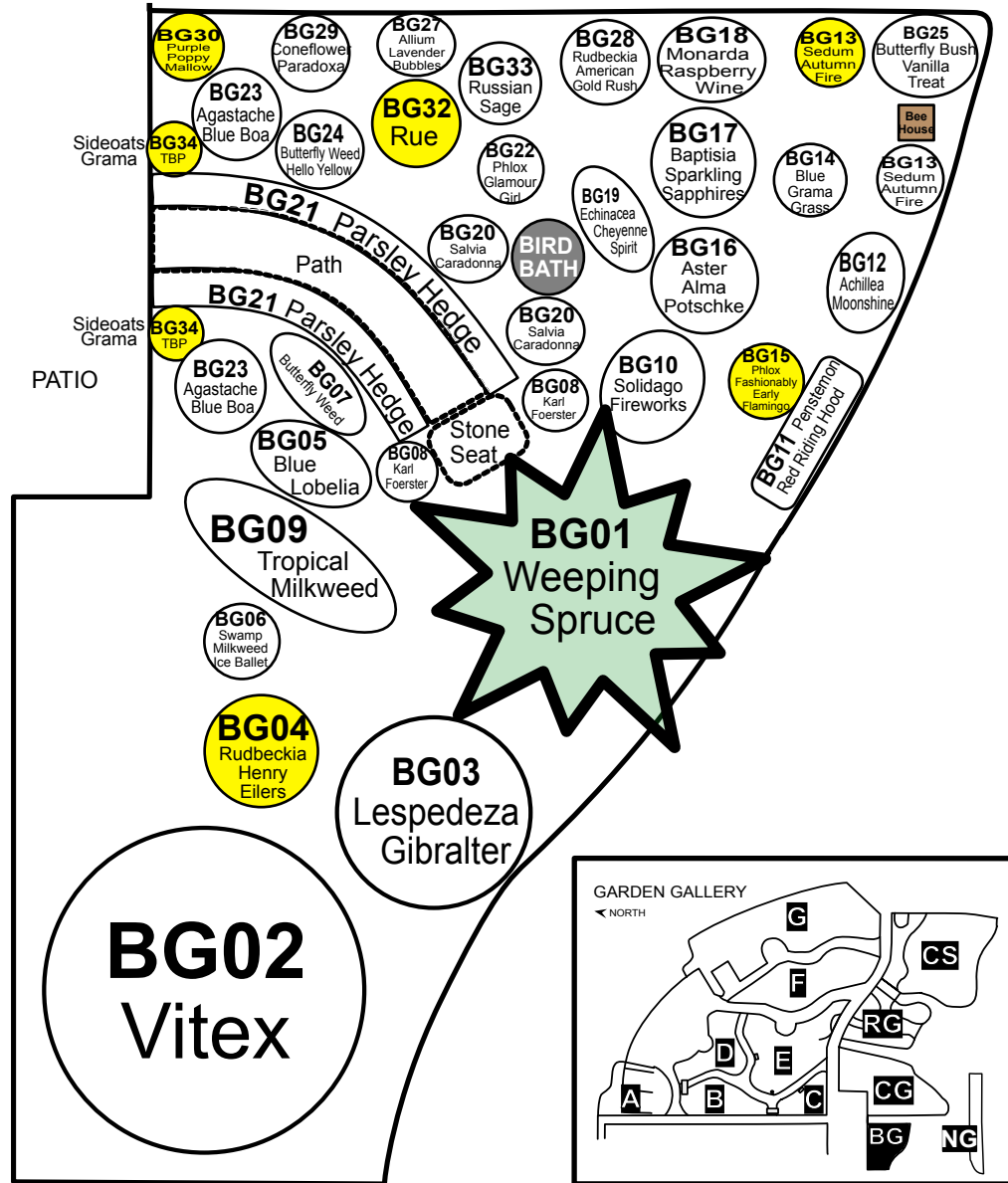


Johnson County Extension Garden Gallery Section Butterfly Garden - 2025 Map

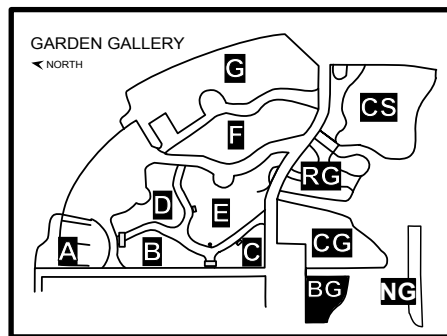
BG



SIDEWALK



- BG01 - Picea abies pendula - Weeping Spruce
- BG02 - Vitex - Lilac Chastetree
- BG03 - Lespedeza 'Gibraltar' - Bush clover
- BG04 - Rudbeckia sub. 'Henry Eilers' - Sweet Coneflower
- BG05 - Lobelia siphilitica - Blue Cardinal Flower
- BG06 - Asclepias incarnata 'Ice Ballet' - Swamp Milkweed
- BG07 - Asclepias tuberosa - Butterfly Weed
- BG08 - Calamagrostis 'Karl Foerster' - Feather Reed Grass
- BG09 - Asclepias curassavica - Tropical milkweed
- BG10 - Solidago 'Fireworks' - Goldenrod
- BG11 - Penstemon 'Red Riding Hood' - Beard tongue
- BG12 - Achillea 'Moonshine' - Yarrow
- BG13 - Sedum 'Autumn Fire' - Stonecrop
- BG14 - Bouteloua 'Blonde Ambition' - Blue Grama Grass
- BG15 - Phlox 'Fashionably Early Flamingo' - Garden Phlox
- BG16 - Aster 'Alma Potschke' - New England Aster
- BG17 - Baptisia Decadence 'Sparkling Sapphires' - False Indigo
- BG18 - Monarda 'Raspberry Wine' - Beebalm
- BG19 - Echinacea 'Cheyenne Spirit' - Coneflower
- BG20 - Salvia 'Caradonna' - Meadow Sage
- BG21 - Petroselinum crispum - Parsley
- BG22 - Phlox p. 'Glamour Girl' - Garden Phlox
- BG23 - Agastache 'Blue Boa' - Hyssop
- BG24 - Asclepias 'Hello Yellow' - Butterfly Weed
- BG25 - Buddleia 'Vanilla Treat' - Butterfly Bush
- BG27 - Allium 'Lavender Bubbles' - Ornamental Onion
- BG28 - Rudbeckia 'American Gold Rush' - Black Eyed Susan
- BG29 - Echinacea 'Paradoxa' - Coneflower
- BG30 - Callirhoe involucrata - Purple Poppy Mallow
- BG32 - Ruta Graveolens - Rue
- BG33 - Perovskia 'Blue Steel' - Russian Sage
- BG34 - Bouteloua curtipendula - Sideoats Grama - **TBP**



Let Naturalize:
Verbena bonariensis

TBP - To Be Purchased or moved